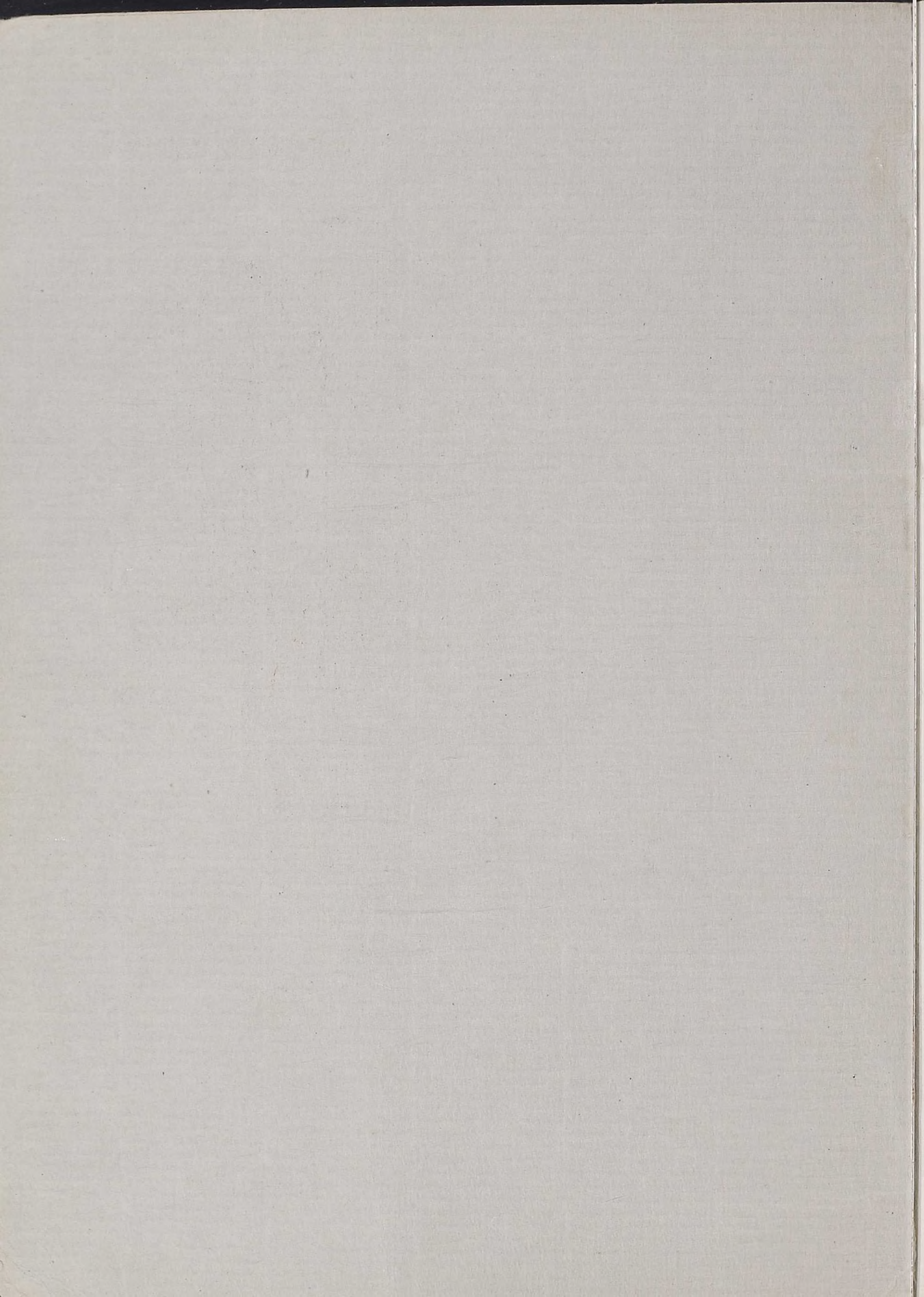


1933



1933















# congress 1933







# Illustrations

|   |                    |
|---|--------------------|
| Cover Design—Lady .....                 | CHARLES SHOEMAKER  |
| Book Plate .....                        | RICHARD LONG       |
| Title Page .....                        | KATHERINE AUSTIN   |
| Illustration Head Piece.....            | HELEN HAVENS       |
| Foreword .....                          | CECILIA KUWICK     |
| Faculty .....                           | JOHN CRAWFORD      |
| Seniors .....                           | ALICE LONGNECKER   |
| Juniors .....                           | JANICE SHEPARD     |
| Sophomores .....                        | IOLA HENHAWK       |
| Freshmen .....                          | ELEANOR RUNALS     |
| Sports .....                            | MERLE STUCHEL      |
| Poetry .....                            | CAROLINA GAGLIARDI |
| Music .....                             | WINONA HASELOFF    |
| Art .....                               | MARION COUGHLIN    |
| Senior Officers.....                    | BETTY JOBE         |
| Wayside .....                           | CAROLINE BOYD      |
| O. H. S. Head-Piece—Organizations ..... | JACK LEE           |
| Monk .....                              | HELEN PERKINS      |
| Fleur-de-lis Tail Piece .....           | DOROTHY ROUNDS     |
| Key Tail Piece .....                    | VIRGINIA DAWSON    |
| Castle .....                            | MARGARET SLAWSON   |
| Advertisements .....                    | ALLAN McDONELL     |



A decorative border with a repeating floral motif, featuring stylized leaves and flowers connected by flowing lines, framing the central text area.

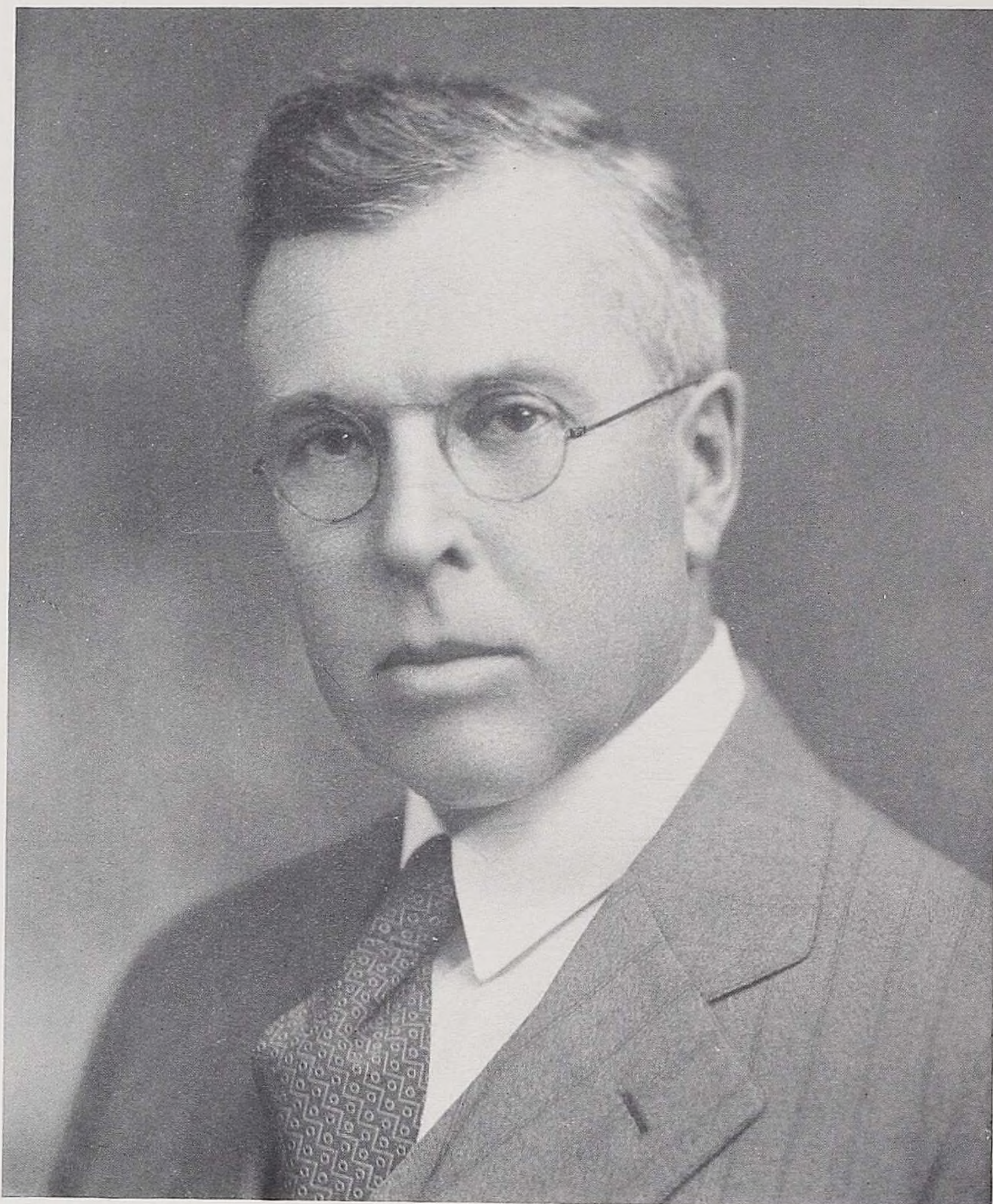
## Foreword

**ALTHOUGH** hampered by prevailing financial conditions, rising above individual cuts and stiff covers, nevertheless determined to make this an outstanding publication, the yearbook staff presents this book as a record of the class of '33.

We of the staff wish to express our sincere thanks to Mr. Sackett, Miss Hobart, Miss Mitchell, and Miss Ball, who have co-operated with us in bringing this publication to its present state. We also owe a debt of gratitude to the Parent-Teachers' Association who have aided us financially by sponsoring a series of dime dances which proved to be very popular with the stalwart Knights and their fair Ladies.

It is our sincerest hope that this book will meet with your approval and remain as a fitting reminder of the happy days at O. H. S.





HERBERT L. SACKETT  
*Principal of Olean High School*





## Dedication

To Miss Mary Fitzgerald who welcomed us when we came to  
and sent us on our way better for having known her, with  
expression of our appreciation.







*CATHERINE M. FITZGERALD*

With the deeply mourned death of Catherine M. Fitzgerald in January, our school lost a part of its soul and spirit. Her ready wit and keen sense of humor enlivened many hours devoted not only to work but to recreation. Her optimism fortified by her courage and faith carried her through many a trying period when hearts grew heavy and the world looked gray. Her penetrating, intelligent mind was undulled by petty thoughts; an idealist at heart, she lived up to her standards. Her sympathetic nature responded to her companion's moods as easily as the sensitive strings of a violin. And those who gained her as a friend found a steadfast loyalty and a ready smile. A sincere appreciation of beauty in all its aspects was hers, and she nurtured this feeling so strongly within herself that it blossomed by the blossoms of her effort. How brief was the journey to the celestial its attainment.





THE FACULTY



# faculty





# Faculty

| NAME                 | DEGREE       | COLLEGE                                   | DEPARTMENT   |
|----------------------|--------------|---|--|
| Herbert L. Sackett   | A. M., A. B. | Brown University .....                    | <i>Principal</i>   |
| Dorothy Atkins       | B. A.        | D'Youville College .....                  | <i>English</i>   |
| M. Elizabeth Baldwin | A. B.        | Syracuse University .....                 | <i>English</i>   |
| Anna Ball            |              | Syracuse University .....                 | <i>Art</i>   |
| Doris Butler         | B. A.        | New York State College for Teachers.....  | <i>Commercial</i>  |
| Mary A. Casey        | B. A.        | St. Bonaventure's .....                   | <i>English</i>   |
| Dorothy D. Coburn    | B. A.        | Kalamazoo College .....                   | <i>History</i>   |
| Violet A. Cowell     |              | N. Y. State Teachers College.....         | <i>Mathematics</i>   |
| Maybelle Curtiss     | B. S.        | Cornell University .....                  | <i>Home Economics</i>  |
| Mary Downey          | B. A.        | University of Toronto.....                | <i>English, Ec. Geography</i>                                |
| Mary C. Driscoll     | A. B.        | N. Y. State College for Teachers .....    | <i>English</i>   |
| Joyce Dudley         | B. S.        | State Teachers at Buffalo .....           | <i>Home Economics</i>  |
| Rose L. Eber         | B. S.        | Syracuse University .....                 | <i>Commercial</i>  |
| Thelma E. Everleth   | B. A.        | New York State College for Teachers.....  | <i>Commercial</i>  |
| Lois D. Farwell      | B. A.        | Elmira .....                              | <i>French</i>  |
| Mary Fitzgerald      |              | Mansfield Teachers College.....           | <i>Junior Study Hall</i><br><i>Head of El. Algebra Dept.</i> |
| Marion Foote         | B. A.        | Columbia University .....                 | <i>Mathematics</i>   |
| Francis W. Frey      | B. S.        | St. Bonaventure's .....                   | <i>Physical Education</i>                                    |
| Gretchen K. Geary    | A. B.        | New Rochelle College .....                | <i>Latin and French</i>                                      |
| Ida Gould            | A. B.        | New York State College for Teachers.....  | <i>History</i>   |
| Arlouine Hall        | B. A.        | Milton College, Milton, Wisconsin....     | <i>History and Civics</i>                                    |
| Mary S. Hannigan     | A. B.        | St. Bonaventure .....                     | <i>History</i>   |
| Margaret E. Hannon   | B. A.        | D'Youville College .....                  | <i>English</i>   |
| Elizabeth Herzog     | B. A.        | St. Bonaventure .....                     | <i>English</i>   |
| Lulu M. Hill         | B. S.        | Alfred University .....                   | <i>Science</i>   |
| Lotta B. Hobart      | A. B.        | University of Michigan .....              | <i>Senior Study Hall</i><br><i>Head of English Dept.</i>     |
| Jane Juengel         | A. B.        | New York State College for Teachers ..... | <i>Commercial</i>  |
| Katherine M. Karl    | A. B.        | Goucher College .....                     | <i>Biology</i>   |
| Donald M. Keagle     |              | Mechanics Institute, N. Y. U.             | <i>Supervisor Industrial Arts</i>                            |
| Hortense A. Keller   | B. S.        | St. Lawrence University .....             | <i>Mathematics</i>   |



# Faculty

| NAME                 | DEGREE       | COLLEGE                                      | DEPARTMENT                      |
|----------------------|--------------|--|---------------------------------|
| Caroline G. Larkin   | B. A.        | Smith .....                                  | <i>Commercial and History</i>   |
| Ethel MacDowell      | B. S.        | St. Bonaventure .....                        | <i>Biology</i>                  |
| Catherine M. McMahon | B. A.        | D'Youville College .....                     | <i>History</i>                  |
| Elizabeth Mitchell   |              | New York University .....                    | <i>Head of Commercial Dept.</i> |
|                      |              | Rochester Business Institute                 |                                 |
| Doris W. Morris      |              | Cortland Normal .....                        | <i>Physical Education</i>       |
| Gertrude Oliver      | Ph. B.       | College of Wooster .....                     | <i>Latin</i>                    |
| Christopher O'Toole  | B. S.        | State Teachers College at Buffalo.....       | <i>Industrial Arts</i>          |
|                      |              | St. Bonaventure College .....                | <i>Wood Working</i>             |
| Caroline M. Percival | A. B.        | Syracuse University .....                    | <i>English</i>                  |
| Mary L. Pratt        | Ph. B.       | Syracuse University .....                    | <i>German</i>                   |
| Laura Prosser        |              | .....  | <i>Office Secretary</i>         |
| Gladys Robertson     | B. M.        | Ithaca Conservatory .....                    | <i>Music</i>                    |
| Helena F. Schleich   | A. B., B. S. | Cornell University, Columbia University..... | <i>Librarian</i>                |
| Beatrice H. Scott    | B. S.        | William Smith College .....                  | <i>Algebra</i>                  |
| Irene Sergeant       | B. S.        | University of Rochester .....                | <i>Home Economics</i>           |
| M. Wesley Smith      | A. B.        | Hamilton .....                               | <i>Science and Mathematics</i>  |
| Richard Teute        |              | Conservatory of Music, Cologne.....          | <i>Orchestra</i>                |
| Norman R. Utecht     | B. S.        | St. Bonaventure .....                        | <i>Mathematics and Physics</i>  |
| Jessie M. Wall       |              | Mechanics Institute, University of Rochester |                                 |
|                      |              | Supervisor of Home Economics                 |                                 |
| Howard A. Wands      |              | Buffalo Normal .....                         | <i>Vocational</i>               |
| Mabel E. Wilson      | B. A.        | Hiram College .....                          | <i>Mathematics</i>              |
| Jennie R. Wombough   | Ph. B.       | Syracuse University, Simmons College         |                                 |
|                      |              | Head of History Dept.                        |                                 |
| Ruth C. Zuber        | A. B.        | Syracuse University .....                    | <i>English</i>                  |





## Year Book Staff

|  |                    |
|--|--------------------|
| <i>Editor-in-Chief</i> .....           | Priscilla Oakleaf  |
| <i>Business Manager</i> .....          | Jack Allen         |
| <i>Advertising Manager</i> .....       | William Donnelly   |
| <i>Managing Editor</i> .....           | Everett Lord       |
| <i>Assistant Managing Editor</i> ..... | Richard McLaughlin |
| <i>Faculty Advisor</i> .....           | Miss Hobart        |

### *Associate Editors*

|                |                     |
|----------------|---------------------|
| Lucille Feigel | Emily Lloyd         |
| Evelyn Hirst   | Tony Rogers         |
| Mary Wenke     | Alice Longnecker    |
| Betty Jobe     | Claude Karl         |
| Ruth Martin    | Grace Runals        |
| George Wilcox  | Catherine O'Donnell |
| Betty Quirin   | Mary McLaughlin     |







# OBS

## Class Poem

### *THE CLASS OF '33*

All on a bright September morn' it fell,  
That, gathering in merry group, went forth  
A band of children, to explore a life  
Unknown to them . . . .  
Their joyous cries pursued the dusty air;  
They, care-free, laughed at all the world  
And gazed in wonder at the travelers  
Who tearfully or grimly passed their way.  
Too soon the road grew sharp beneath their feet,  
And steep the hills which faced them in their path.  
But when, exhausted by their toil, they stood  
At some far distant cross-road, and did seek  
Where-in their path did lie, there came kind souls  
And lent a hand, or pointed out the course—  
Thus on they pressed through sun-light or through rain  
Till on their sight there burst, as in a dream  
Twin shining gates, which opened for their feet  
The way of life . . . .

We are that band, before whose wondering eyes  
There opens now a newer, better life.  
These four long years we have been comrades of  
The road. And now we part; We may not meet  
Again, but there will linger in our minds  
The happy memories of a youth gone by.

—Richard McLaughlin.





## Senior Officers

*President*

ROBERT WHITE

*Vice President*

LEONE VARLEY

*Secretary*

VIRGINIA EVERHART

*Treasurer*

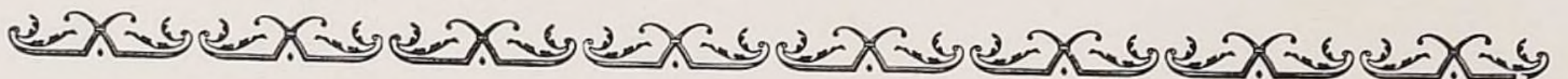
FLOYD ROGERS

*Student Council Members*

GRACE RUNALS  
PRISCILLA OAKLEAF  
CHARLES SHOEMAKER  
RAYMOND MARLATT

*Class Advisor*

MISS HOBART







THE SENIORS





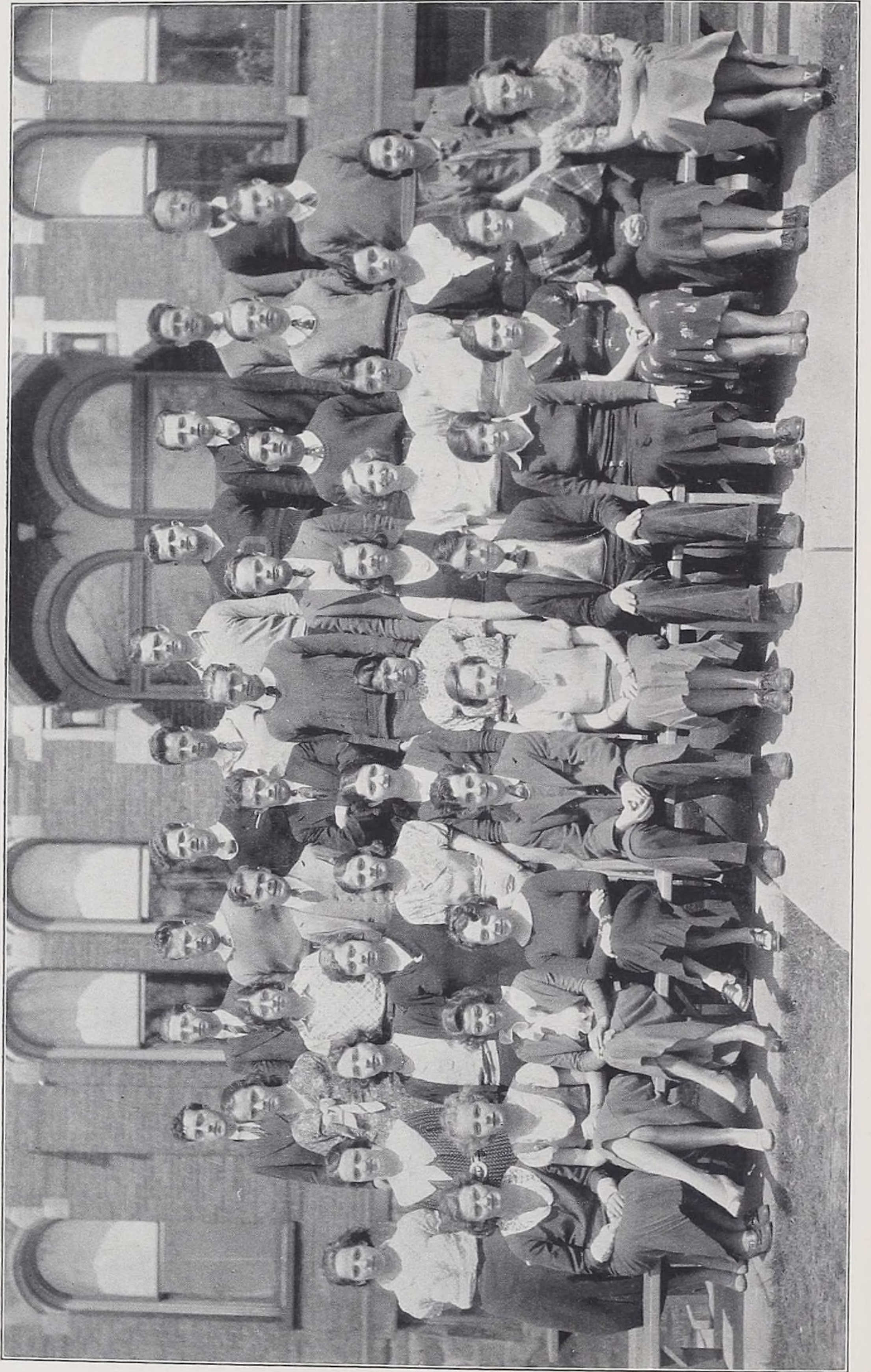
THE SENIORS





THE SENIORS





THE SENIORS



# Senior Activities

ALLEN, JOHN R.—President Freshman Class, Hi-Y, 1, 2; Interclass Basketball 1, 2; Athletic Association, 1, 2, 3, 4; Stage Manager of Freshman play; Business Manager of Congress; Yearbook Staff.

*"An honest man's the noblest work of God."*

ALLISON, MERVILLE—Orchestra, 1, 2, 3; Athletic Association, 2; Glee Club, 3, 4; Competitive Assembly, 1, 2; President Orchestra, 3; Spring Concert, 1, 2, 3; State Honor League.

*"The glory of a firm capacious mind."*

ANDERSON, RALPH E.—

*"What plaguey mischief and mishap  
Do dog him with their after claps!"*

ARCHIBALD, RAE CYNTHIA—

*"With eyes that look into thy very soul."*

AURINO, MARY—Basketball, 1, 2; Volleyball, 1; Dramatic Club, 1; Athletic Association, 1, 2; Sewing Play, 2; Music Festival, 3; Wayside 3, 4.

*"Her stature tall—I hate a dumpy woman."*

AXTELL, MARION—Dramatic Club, 1.

*"Come not within the measure of my wrath."*

BENDER, ALBERT L.—

*"I have found you an argument; but I  
am not obliged to find you an understanding."*

BENNETT, EBER FRED—

*"Forward and frolic glee was these  
The will to do, the soul to dare."*

BENNETT, GORDON—Athletic Association, 1, 2, 3, 4.

*"On their own merits modest men are dumb."*

BERGSTROM, ETHEL—Glee Club, 2, 3; Wayside, 3, 4; Chairman, Wayside Program Committee; Fredonia Spring Music Festival, 3; Spring Music Festival, 2, 3; Dramatic Club, 1; Athletic Association, 1, 2, 3, 4.

*"The mildest manners and the gentlest heart."*

BISCHALANEY, JOSEPH A.—

*"We grant although he had much wit,  
He was very shy of using it."*

BORDONARO, CHARLES — Athletic Association, 1, 2, 3, 4.

*"I care not for the role of common men."*

BOSLER, DOUGLAS—Hi-Y, 3, 4; State Honor League.

*"He did think all mischief fair,  
Although he had a knack of joking."*

BOYD, CAROLINE—Dramatic Club, 1; Thanksgiving Play, Junior Assembly, 1929; Glee Club, 2, 3; Wayside, 3, 4; Treasurer Wayside, 4; Fredonia Spring Music Festival, 3; State Honor League.

*"Gentle of speech, beneficent of mind."*

BRUNDAGE, PAUL—Athletic Association, 1, 2, 3, 4; Student Police, 2; Band, 3; Asst. Manager Track, 3; League Softball, 2; League Basketball, 2.

*"Everything comes if a man will only wait."*

BURDICK, JAMES D.—

*"One may smile, and smile and be a villain."*

CAPPELLETTI, ANTHONY—Football, 1, 2; Basketball, 1; Track, 1; Athletic Association, 1, 2, 3.

*"Nothing succeeds like success."*

CARD, ROY—Athletic Association, 1, 2, 3, 4; Hi-Y Club, 2, 3, 4; Treasurer of Hi-Y, 3; Virgil Banquet 3; President of Hi-Y, 4; State Honor League.

*"The man who wins is the man who does—*

*The man who makes things hum and buzz."*

CARTER, NORMAN—Football, 3, 4.

*"Thy modesty's a candle to thy merit."*

CASTLE, ARCHIE B.—

*"His silence answers ye."*

CHEVASSU, WILLIAM EUGENE—

*"A man too happy for mortality."*

CHIAPUSSO, MARY E.—Wayside, 4; Parent-Teachers' Association Entertainment, 2; Home-making Club, 4.

*"For she was just the quiet kind  
Whose natures never vary."*



CHYZAN, WALTER G.—

*"Short and stocky—Very cocky!"*

CLANCY, CHARLES—Football, 3, 4;  
Track, 2, 3; Boys' Glee Club.

*"Bachelor's Hall! What a queer looking  
place it is.*

*Keep me from such all the days of my  
life."*

CLARK, HILMA ALBERTA—

*"Be good, sweet maid,  
And let who will be clever."*

CLARK, LAWRENCE GEORGE—

*"You are a devil at anything; and there  
is no kind of thing in the versal world  
but what you can turn your hand to—"*

COLLIGAN, MARY—Competitive As-  
sembly, 1, 2, 3; Wayside, 3; Thanks-  
giving Play, 2; Sewing Play, 2; All  
Class Night Entertainment, 2, 3;  
Musical Festival, 3; Dramatic Club,  
1, 2.

*"And then she danced—oh heaven! her  
dancing."*

COON, MARTHA—Basketball, 1; Sec-  
retary Junior Class; Invitation Com-  
mittee of Football Dance; Programme  
Committee for Junior and Senior  
Prom.; Athletic Association, 1, 2, 3, 4;  
Virgil Banquet, 3, 4; State Honor  
League.

*"Such joy ambition finds."*

CORDS, LOUISE—Athletic Association,  
4; Wayside, 4; Hiking Club, 4; Base-  
ball, 3; Basketball, 4; Soccer, 3, 4;  
Volley Ball, 4; Home Making Club, 4;  
Playday, 3, 4.

*"An all around good sport."*

CORNISH, WEBSTER—

*"Contentment is natural wealth."*

CRAWFORD, W. H. BLISS—

*"A useful and a lasting friend  
Who kindness and goodwill does blend."*

CRIDLER, ERNEST C.—

*"He was so generally civil, that nobody  
thanked him for it."*

DAVIS, GRACE—Wayside 3, 4.

*"When once our Grace we have forgot,  
Nothing will go right."*

DAWSON, RICHARD HAROLD—

*"Oh, bed! bed! delicious bed  
A heaven upon earth to the weary head."*

DAWSON, VIRGINIA—Orchestra, 1, 2,  
3, 4; Wayside 3, 4; Christmas Play 1.

*"And her modest answer and graceful  
air*

*Show her wise and good as she is fair."*

DE ROSE, ANTHONY J.—State Honor  
League.

*"The world is good, and the people are  
good,*

*And we're all good fellows together."*

DE MARTE, RALPH—

*"Happy am I, from care I'm free."*

DEMPSEY, MALCOLM JOHN—

*"He is a man all in all."*

DODGE, ROBERT C.—Williston Acad-  
emy, Easthampton, Mass.; Soccer, 1,  
2, 3; Basketball, 1, 2, 3; Boxing, 1, 2,  
3; Tennis, 1, 2, 3; Track, 2, 3; Glee  
Club, 1, 2; Vice President 2; Secretary  
2; Adelphi Social Club, 1, 2, 3; Vice  
President, 3; Honor League for Lan-  
guages, 2, 3; Spanish; Student Coun-  
cil, 3; Lettermen's Club, 1, 2, 3; Junior  
Banquet Committee, 3; Junior Dance  
Committee, 3; Freshman Initiation  
Committee, 3; Orchestra, 1, 2. Note  
—Robert did most of his work before  
he came to Olean.

*"His locked, lettered, brave brass collar  
Showed his the gentleman and scholar."*

DODGE, MARSHALL—Mohawk High  
School. Pres. Sophomore Class, 2;  
Sophomore Class Play, 2; Stage Man-  
ager Senior Operetta, 3; Basketball,  
1; Baseball, 1; Competitive Assem-  
bly, 3.

*"Life's master—word is work."*

DONNELLY, WILLIAM JOHN PAT-  
RICK—Athletic Association, 2, 4;  
Congress Staff, 4; Yearbook Design, 2

*"I am always in haste,  
But never in a hurry."*

DONNELLY, WILLIAM C.—

*"He's of stature somewhat low  
Your hero should be tall, you know."*

DORR, ROBERT F.—Band, 1, 2.

*"He is a gentleman from soul to crown."*



DRISCOLL, ANNE—Athletic Association, 1, 2, 3, 4; Hiking Club, 1, 2, 3, 4; Volleyball, 3, 4; Basketball, 4; Soccer, 3, 4; Playday, 3, 4.

*"So sweet the blush of bashfulness."*

DUNNE, BERNARD—Student Council, 3; Tennis Team, 3, 4; Inter-mural Sports, 2, 4.

*"Self-reverence, self-knowledge, self-control."*

DWAILEEBE, ROY—

*"The rule of my life is to make business a pleasure, and pleasure my business."*

EHMAN, BURNICE—Athletic Association 2, 3, 4; Soccer 3, 4; Volleyball 4; Wayside 4; Virgil Banquet 4; Congress Staff 4; Hiking Club 2, 4; Playday 4; Soccer Banquet 4; Yearbook Staff 4.

*"Her talk was like a stream which runs With rapid change from rocks to roses."*

ELLIS, BERESFORD—Spring Concert, 1, 2, 3, 4; Hi-Y, 4; Vice President and Secretary of Band, 4; Cumulative Letter; Vice President of Radio Club; Athletic Association.

*"Music is well said to be the speech of angels."*

ETHRIDGE, SARA—Wayside, 3, 4; State Honor League.

*"Real joy comes from having done things that are worth while."*

EVENS, ROBERT W.—

*"Content to follow when others lead the way."*

EVERHART, VIRGINIA—Soccer, 4; Capt. Basketball, 4; Volleyball, 4; Secretary, Senior Class, Athletic Association, 4; Playday, 4; Girls' Hi-Y 4.

*"Her every look, her every smile Shot right and left a score of arrows."*

EWING, ROBERT—Athletic Association, 1, 2, 3, 4; Hi-Y, 1, 2, 3, 4; Dramatic Club, 1, 2; President, Freshman Class, Treasurer, Sophomore Class, Secretary, Hi-Y; Thanksgiving Play, 1; Virgil Banquet 3, 4; Competitive Assembly, 1; Christmas Play, 1; State Honor League.

*"Some things are great to little men."*

FARAGHER, THOMAS—

*"Young fellows will be young fellows."*

FAY, EDNA—Orchestra, 1; Competitive Assembly, 1; Athletic Association, 2, 3.

*"I had rather have a fool to make me merry than experience to make me wise."*

FEIGEL, LUCILLE—Home Economics Demonstration night, 4; Yearbook Staff, 4; Congress Staff, 4; Soccer, 4; Volleyball, 4; Soccer Banquet, 4; Athletic Association, 4; Wayside, 4; Home Making Club, 4; Basketball Banquet, 4; Baseball, 4; Track, 4.

*"Everyone excels in something in which another fails."*

FISHER, CARL—

*"A self-made man."*

FITZPATRICK, JAMES—Football, 1, 2, 3, 4; Football Captain, 4; Basketball, 1, 2, 3, 4; Stage Manager, 2; Cumulative Letter; Lettermen's Club; Track, 3, 4; Class Basketball, 1.

*"A man can win no glory in his lifetime than by feats of hand and foot."*

FITZPATRICK, WILLIAM D.—

*"What a frosty-spirited rogue this is."*

FLAHERTY, EDWARD—Athletic Association, 1, 2; Student Police, 2.

*"He came, conquered, and then got out."*

FLETCHER, CLIFFORD JAMES—Hi-Y, 4.

*"The Gods asset the strongest."*

FULLER, JANE—Hiking Club, 1, 2, 3, 4; President of Hiking Club, 4; Basketball, 1, 2, 3, 4; Volleyball, 1, 2, 3, 4; Baseball, 2, 3, 4; Captain, Soccer, 3, 4; Track, 4; Tennis, 3, 4; Girls' Varsity Letter, 1, 2, 3, 4; Athletic Association, 1, 2, 3, 4; President, Athletic Association, 4; President, Girls' Sport Council, 4; General Manager, Junior Girls' Sports; Girls' Playday, 3, 4; Glee Club, 3; Dramatic Club, 3; Wayside, 3, 4; President, Wayside, 4; Music Committee, Football Dance, 4; President, Girls' Hi-Y.

*"The great end of life is not knowledge but action."*

GAGLIARDI, CAROLINA—Volleyball, 1, 2; Basketball, 1; Baseball, 1, 2.

*"Art is power."*



GARLAND, KATHLEEN—

*"Pursue thine heart's desire and thine  
own happiness."*

GARR, FREDERICK H.—

*"A kind and gentle heart he had  
To comfort friends and foes."*

GARR, JUSTUS W.—

*"Who does not love wine, women, and  
song  
Remains a fool his whole life long."*

GARVEY, CATHERINE—Wayside, 3,  
4; Athletic Association, 1, 2, 3, 4.

*"I hope to see you one day fitted to a  
husband."*

GEIGER, FRANK D. JR.—

*"What should a man do, but be merry."*

GERRY, EVELYN—Athletic Association, 2, 3, 4; Wayside, 3, 4.

*"Give every man thy ear but few thy  
voice."*

GIBBONS, JANE—Christmas Play, 1;  
Wayside, 3, 4; Athletic Association, 1,  
2, 3; Hiking Club, 1; Dramatic Club,  
1; Glee Club, 2, 3; Spring Concert, 2,  
3; Fredonia Festival, 2; Home Mak-  
ing Club, 4.

*"Independent! That's her all over."*

GIERMEK, WALTER—

*"A man of hope, looking forward."*

GILL, CATHERINE—Competitive As-  
sembly, 1; Christmas Play, 1; Hiking  
Club, 1; Glee Club, 1, 2; Spring Con-  
cert, 1, 2; Fredonia Musical Festival,  
2; Wayside, 3, 4; Athletic Association,  
1, 2, 3, 4.

*"When you are quite grown-up, my dear,  
Your music many hearts will cheer."*

GOODWIN, FRANCIS—Tennis Team, 3

*"Such and so various are the tastes of  
men."*

GUENTHER, IRWIN—Dramatics, 1, 2.

*"Flirtation, attention without intention."*

HEINZ, RAYMOND—

*"With malice toward none."*

HENDERSON, MAE—Athletic Associa-  
tion, 1, 2, 3.

*"In each cheek appears a pretty dimple."*

HENHAWK, IOLA—

*"Strange to the world, she wore a bash-  
ful look,  
The fields her study, nature is her book."*

HEYSEL, JANET—Wayside, 4; Soccer;  
Volleyball; Basketball, 4; Hiking Club  
1; Fashion Play, 4; Playday, 3, 4;  
Basketball Banquet, 4.

*"The hand that made you fair  
Hath also made you good."*

HILDEBRANDT, JOHN—Athletic As-  
sociation, 1, 2, 3, 4; Decoration and  
Invitation Committee for Junior-Sen-  
ior Prom, Decoration Committee  
Wayside, 3; Hi-Y, 2, 3; State Honor  
League.

*"Innocence and youth should ever be  
unsuspicious."*

HIRST, EVELYN—Yearbook Staff, 4;  
Athletic Association, 2; State Honor  
League.

*"A little more sleep, a little more slum-  
ber to rest her weary eyes."*

HITCHCOCK, EVA C.—

*"Strong in will; Earnest in endeavor."*

HOFFMAN, PETER HERMAN—

*"Write me as one who loves his fellow-  
men."*

HOPKINS, BERNICE—Wayside, 3, 4;  
Sewing Play, 2, 3; Fashion Show, 4.

*"With thee conversing, I forget the way"*

HOPKINS, DONALD—Orchestra, 1, 2,  
3, 4; Glee Club, 3, 4; Competitive As-  
semblies, 1, 2, 3; Athletic Association  
1, 2, 3, 4; League Basketball, 3.

*"He had a head to contrive, a tongue to  
persuade and a hand to execute any  
mischief."*

HUBBS, GERALD—Football '29, '30;  
Intra-mural Basketball and Softball;  
Tennis Team, 3.

*"Studious of his ease  
And fond of humble things."*

HYNDMAN, MADELYN—

*"If eyes were made for seeing  
Then beauty is its own excuse for being."*



JOHNSON, IVER—Basketball, 4.  
*"We meet you, like a pleasant thought,  
when such are wanted."*

JOHNSON, LAWRENCE — Accompanied Boys' Glee Club, 3, 4; Virgil Banquet, 4; Spring Concert, 3, 4; State Honor League.

*"Much wisdom often goes with fewest words."*

KANE, JOHN R.—

*"A man, he seems cheerful of yesterday  
and confident tomorrow."*

KARL, CLAUDE—Congress Staff; Athletic Association, 2, 3; Yearbook Staff, 4; Inter-class Basketball, 2, 3.

*"Your wit makes others witty."*

KARL, WILMA—Athletic Association, 1, 2, 3, 4; Wayside, 3, 4.

*"I live on hope, and that I think do all  
who come into this world."*

KEENAN, JOSEPH B.—Intra-Mural Basketball, 3, 4; Softball, 3, 4; Athletic Association, 1, 2, 3, 4.

*"The more I see of men the more I like  
dogs."*

KEENEY, RUTH—Basketball, 1; Hiking Club, 1, 2; Dramatic Club, 1; Thanksgiving Play, 1; Wayside, 3, 4; Soccer, 4; Athletic Association, 1, 2, 3, 4.

*"Genteel in personage, conduct, and  
equipage."*

KLOC, JOHN—Intra-Mural Basketball, O. H. S. A. A.

*"On what strange stuff ambition feeds."*

KLOCK, JANICE—Sewing Play, 4.

*"A form so fair, that like the air  
'Tis less earth than heaven."*

KNIESER, MICHAEL J.—

*"Keep ever a tight run on appetite."*

KRANOCK, MARY—Sewing Play, 2; Wayside, 3, 4; Athletic Association, 4.

*"I will be friends with all and have their  
love."*

KREYDT, ROBERT—

*"He is a good fellow, I can tell you  
that."*

KUBIC, JOHN F.—

*"Two single gentlemen rolled into one."*

KUZAK, ANNE—Wayside, 4; Home Economics Club, 4; Parent-Teachers' Association Entertainment, 2.

*"Of her bright face one glance will trace  
a picture on the brain."*

LA CAVERA, GERALD—Football, 3, 4; Class Basketball, 2, 3; Athletic Association, 1, 2, 3; Student Police, 2.

*"Full of wise saws and modern instances."*

LANE, RUTH—Home Economic, 4; Wayside, 3, 4; Athletic Association, 1, 2.

*"A dashing damsel, gay and pert."*

LANG, WILFORD M.—

*"Of manner's genteel, of affections mild;  
In wit a man, simplicity a child."*

LANGS, LA VERNE—Band, 1.

*"His voice no touch of harmony admits  
Irregularly deep and shrill by fits."*

LAVERTY, RICHARD — Basketball Manager; Athletic Association, 3, 4; Athletic Council, 4; Baseball, 2, 3, 4.

*"A merry heart maketh a cheerful countenance."*

LE COMPTE, JEANNE MURIEL—

*"She is a winsome wee thing—  
She is a handsome wee thing."*

LINEHAN, ROBERT—Hi-Y, 3, 4; Athletic Association, 1, 4; Inter Class Basketball, 2, 3.

*"He would talk—  
Lord, how he would talk."*

LIGHT, DORIS—Dramatic Club, 1; Wayside, 3, 4; Sewing Play, 4; Invitation Committee for Football Dance, 4.

*"Her airs, her manners, all who saw,  
admired.  
Courteous tho coy, gentle tho retired."*

LLOYD, EMILY—Competitive Assembly, 2; Congress Staff; Athletic Association, 1, 2, 3, 4; Wayside, 4; Yearbook Staff.

*"She is the fairest of them all—"*

LONG, RICHARD—

*"Stubborn labor conquers all things."*



LONGNECKER, ALICE — Christmas Play, 1; Basketball, 2, 3, 4; Volleyball, 2, 3, 4; Soccer, 3, 4; Hiking Club, 1, 2, 3, 4; Secretary, 4; Baseball, 2, 3, 4; Girls' Playday, 3; First place, 100 yard dash, Wellsville, 4; Track, 4; Girls' Hi-Y, 4; Wayside, 3, 4; Athletic Association, 4; Congress Staff, 4; Girls' Letter, 2, 3, 4; Decorating Committee for Football Dance, 4; Manager Volleyball Team, 4; Yearbook Staff, 4; Soccer Banquet, 4; Basketball Banquet, 2, 4; State Honor League.

*"She sketc'd; the vale, the wood, the  
beast,  
Grew lovelier from her pencil shading."*

LOOMIS, THELMA MARIE—

*"My tongue within my lips I reign  
For who talks much must talk in vain."*

LORD, EVERETT A.—Class President, 3; Managing Editor of Congress, 4; Yearbook Staff, 4; Glee Club, 2, 3, 4; Treasurer and Business Manager, 3; Executive Committee Member Glee Club, 4; Dramatic Club, 2, 3; Treasurer, 3; Competitive Assembly, 2; Christmas Pageant, 2; Bi-Centennial Pageant, 3; Thanksgiving Play, 2; Junior Prom Committee, 3; Decoration, Wayside Dance, 3; Spring Concert, 2, 3, 4; Tumbling Team, 3, 4; Track, 3.

*"What do we live for, if not to make  
life less difficult for others."*

LUCYSZYN, HELEN—Girls' Baseball 1.

*"Not for herself alone, but for all."*

LYONS, EUGENE SAMUEL—

*"I would fain grow old learning many  
things."*

MacDUFFIE, WILLIAM—Band, 2, 3, 4; Orchestra, 4; Hi-Y, 3, 4; Athletic Association, 1, 2, 3, 4; Spring Concert, 2, 3; League Basketball, 3, 4; Junior Band, 1, 2; Pyramid Team, 3.

*"The blush is beautiful but it is some-  
times inconvenient."*

MANSOUR, MARY ANN—

*"The mildest manners and the gentlest  
heart."*

MARLATT, RAYMOND J. — Student Council, 4.

*"A healthy mind in a healthy body."*

MARLATT, RUTH—Wayside, 3, 4; Athletic Association; Baseball, 1, 3; Soccer, 3; Hiking Club, 3, 4; Volleyball, 4; Home Economic Club, 4; Playday, 3.

*"All I ask is the Heaven above and the  
road below me."*

MARRA, FRANCES—Wayside, 3, 4; Athletic Association, 2, 3, 4; Volleyball, 2, 4; Hiking, 2, 3; Soccer 4; Invitation Committee for Football Dance; Playday, 3.

*"A mighty spirit fills that little frame."*

MARTIN, RUTH I.—Glee Club, 1, 2; Spring Concert, 1; Fredonia Music Festival, 2; Virgil Banquet, 4; Congress Staff, 4; Yearbook, 4; Athletic Association, 2, 3; State Honor League.

*"Thy every tone is music's own,  
Like that of morning birds."*

MATTERN, EARL—Band, 1, 2, 3.

*"Ye Gods! What have we here."*

McCUE, WILLIAM—Glee Club, 4; Athletic Association, 3.

*"O, this learning, what a thing it is!"*

McDONNELL, ALLAN—

*"I find thee most fit for business."*

McFADDEN, FRED—

*"The world loves a spice of wickedness."*

McLAUGHLIN, RICHARD A.—Glee Club, 3, 4; Hi-Y, 3, 4; Competitive Assembly, 3; Virgil Banquet, 4; Managing Editor Congress, 4; Track, 3, 4; Athletic Association, 3, 4; League Basketball, 3, 4; Spring Concert, 3, 4; Lettermen's Club, 3, 4; Yearbook Staff; State Honor League.

*"Sing and the hills will answer."*

MEIERS, DELORES L.—

*"Her steps were watched, her dress was  
noted,*

*Her sayings were extremely quoted."*

MEISEL, RITA—Wayside, 4.

*"She sits so still and never speaks."*

MILLER, KENNETH—Football, 3, 4; Letterman, 4; Interclass Softball, 3; Basketball, 2; Assistant Manager Track, 3; Athletic Association, 1, 2.

*"Smiles were made to trade you know,  
as along life's way we go."*

MILLER, MERLE ALBERT—

*"Of heart so high, and of heroic mien."*



MOONEY, EDWARD ROBERT—

*"His rash fierce blaze of riot can not last."*

MORGAN, JAMES—Band, 1, 2, 3, 4; Track, 3; Competitive Assembly, 1, 2, 3; Spring Concert, 2, 3, 4; Radio Club, 2, 3; Tumbling Team, 3, 4.

*"The noblest mind, the best contentment has."*

MORICCA, FRANCIS J.—Athletic Association, 1, 2, 3, 4; Orchestra, 1, 2, 3; Competitive Assemblies, 1, 2; Dramatic Club, 3; State Honor League.

*"Naught of delay is there, or of repose."*

MOSES, BERTHA—Basketball, 1, 2; Volleyball, 1, 2; Hiking Club, 1, 2; Athletic Association, 1, 2, 4; Fashion Show, 4.

*"Nothing is more simple than greatness; indeed, to be simple is to be great."*

MUNIGA, ANNA—Athletic Association, 2, 3.

*"A quiet conscience makes one so serene!"*

MUNTZ, MARION—Dramatic Club, 1; Glee Club, 1, 2, 3, 4.

*"For men may come and men may go, But I go on forever."*

NEPRODNEY, ANNA—Soccer, 3; Volleyball, 3; Baseball, 3.

*"Above our life we love a steadfast friend."*

NOONAN, MARY—Glee Club, 1, 2; Wayside, 3, 4; Soccer, 3, 4; Manager Soccer Team, 4; Athletic Association, 1, 2, 3, 4; Basketball, 2; Playday, 3, 4.

*"You should eat to live—  
Not live to eat."*

OAKLEAF, PRISCILLA—Athletic Association, 1, 2, 3, 4; President of Dramatic Club, 3; Secretary Athletic Council, Editor in Chief of Congress; Student Council, 4; Virgil Banquet, 3, 4; Wayside, 3; Basketball, 1; Volleyball, 1; Athletic Letter, 1; Lettermen's Banquet Committee, 3; Sophomore Competitive Assembly; Junior Competitive Assembly; Thanksgiving Pageant; Yearbook Staff; State Honor League.

*"A perfect woman, nobly planned  
To warm, to comfort and command."*

O'DONNELL, CATHERINE—Basketball, 2, 3, 4; Volleyball, 1, 2, 3, 4; Baseball, 2; Soccer, 3, 4; Tennis, 3; Hiking Club, 1, 2, 4; Student Council, 3; Dramatic Club, 1, 2, 3; Junior-Senior Prom Committee; Football Dance Committee; Wayside, 3, 4; Congress Staff; Athletic Association, 1, 2, 3, 4; Committee for Wayside Dance; Soccer Banquet, 4; Basketball Banquet, 1, 3, 4; Girls' Letter, 2, 4.

*"Sweet is revenge—  
Especially to women."*

OELKRUE, HELEN—

*"But oh, she dances such a way!  
No sun upon a summer's day, is half so fine a sight."*

O'NEIL, ANNA AGNES—

*"Better a blush in the face than a blot in the heart."*

OSBORNE, EARL JOHN—

*"Modesty becomes this young man."*

PIECHOTA, WALTER J. — Football squad.

*"His best companions, Innocence and Health."*

PROUDFOOT, JOHN—Band, 1, 2, 3, 4; Orchestra, 3, 4; Competitive Assembly, 2, 3; Christmas Play, 2.

*"An affable and courteous gentleman."*

QUIGLEY, JAMES—

*"What's the good of it? for whose advantage?"*

RAYMOND, JACK—Athletic Association, 1, 2, 3, 4.

*"All you wish is women to win, this is the way all boys begin."*

RAYMOND, LEONARD—Football, 3, 4; Track, 2, 3.

*"Give me a standpoint and I will move the earth."*

REYNOLDS, MILDRED A.—Athletic Association, 1, 2, 3.

*"Let us not be weary in well doing."*

RIEGRAF, PAUL JACOB—

*"Thank you, for nothing."*



ROBARTS, GENE FRANCIS—

*"O, what may man within him hide,  
Though angel on the outward side!"*

ROGERS, TONY—Football, 1932-33;  
Basketball, 1932-33 (varsity); Basket-  
ball Captain; Track, 1932; Treasurer  
Lettermen's Club; Sport Editor Con-  
gress; Class Basketball, 1930; Inter-  
class Track, 1932; Inter-class Basket-  
ball Champs, 1931; Committee for  
County League Playoffs, 1932; Stu-  
dent Police, Bradford Game, 1929;  
Accumulative Letter; Yearbook Staff.

*"The world's champion all around good  
fellow."*

ROGERS, FLOYD—Basketball, 3, 4;  
Athletic Association, 2; Treasurer of  
Senior Class.

*"A wise man is strong;  
A man of knowledge increased strength."*

ROGERS, MARION L.—Wayside, 3, 4;  
Home Economics Demonstration, 4;  
Athletic Association, 1, 2, 3, 4; Dra-  
matic Club, 1; Hiking Club, 1.

*"She'd move the earth to stand her pace."*

RUCINSKI, MARTHA—Wayside, 4;  
Athletic Association, 2, 3, 4; Fall Con-  
cert, 3; Parent-Teachers' Entertain-  
ment, 2.

*"So good natured and friendly is she,  
It's a pleasure with her to be."*

RUGGLES, MARETA — Wayside, 4;  
Home Economics Club, 4.

*"The sweetest thing that ever grew be-  
side a human's door."*

RUGGLES, HELEN O.—

*"Full many a flower is born to blush  
unseen,  
And waste its sweetness on the desert  
air."*

RUNALS, GRACE—Hiking Club, 1, 2,  
3, 4; Dramatic Club, 1, 2, 3; Wayside  
Club, 3, 4; Secretary of Wayside, 4;  
Vice-President of Junior Class; Presi-  
dent of Student Council, 4; Commit-  
tee for Wayside Dance; Committee  
for Invitations for Junior and Senior  
Prom; Basketball, 4; Volleyball, 3, 4;  
Soccer, 4; Baseball, 2, 4; Congress  
Staff; Yearbook Staff; Playday, 3, 4;  
Committee for Football Dance; Ath-  
letic Association, 1, 2, 3, 4; Hi-Y, 4;  
Captain of Volleyball Team, 4; Soccer  
Banquet, 4; Basketball Banquet, 4;  
Girls' Letter, 4.

*"None knew her but to love her,  
Nor named her but to praise her."*

RYAN, RICHARD—

*"A woman is only a woman,  
But a good cigar is a smoke."*

SAMSEL, RICHARD W.—

*"What ever I did not know,  
I was not ashamed to inquire about, so  
I acquired knowledge."*

SANZO, MARIE—

*"Those about her shall from her reap  
the ways of perfect lady."*

SCHEMERHORN, RAY M.—

*"Who hath not paused while beauty's  
pensive eye  
Asked from his heart the homage of a  
sigh?"*

SCHNELL, LEO—Football, 2, 3, 4; Let-  
termen's Club, 3, 4; Intra-Mural Bas-  
ketball; Softball.

*"Stately and tall he moves in the hall  
The chief of a thousand for grace."*

SCHNELL, RAYMOND E.—

*"One still strong man in a blatant land."*

SCHOENBURG, MARIE—

*"And fair she is  
If that mine eyes be true."*

SEULING, MARY MAGDALENE—

*"The manner of this sober maid is de-  
mure and very staid."*

SHERMAN, ROBERT S.—

*"A noble mind has noble thoughts."*

SHOEMAKER, CHARLES — Athletic  
Association, 4; Student Council, 4;  
Decoration Committee for Football  
Dance, 2, 3, 4; Decoration Committee  
Wayside Dance, 1, 2, 3, 4; Chairman  
Adelphia Decoration Committee, 3.

*"Every man has his gift, and the tools  
go to him that can use them."*

SHOEMAKER, MONT—Athletic Asso-  
ciation, 2, 3, 4; Band, 3, 4; League  
Basketball, 3; League Softball, 2.

*"Patience is a necessary ingredient of  
genius."*

SIRIANNI, MADELINE—Dramatics, 1;  
Basketball, 4; Wayside, 3, 4.

*"A sensible and well bred woman."*



SKROBACK, ANNA—Soccer, 3; Volleyball, 3; Baseball, 3.  
*"A maid demure and shy."*

SLIGER, WILLIAM—Athletic Association, 2, 3; Orchestra, 1, 2, 3; Intramural Softball, 2.  
*"Though he was rough he was kindly."*

SMITH, ELMER L.—  
*"Why will one man's yawning make another yawn?"*

SMITH, ESTHER—Athletic Association, 1, 2, 3, 4.  
*"A face with gladness was spread."*

STIER, ESTHER—Athletic Association, 1, 2; Wayside, 4; Congress Staff, 4B; Home Economic Demonstration, 4; State Honor League.  
*"The power of her thought, the magic of her mind—"*

STIMSON, GERALDINE—Athletic Association, 1, 2, 3, 4.  
*"True she is, as she has proved herself."*

STOUT, BERNARD E.—  
*"Well done is better than well said."*

STURM, MARJORIE — State Honor League.  
*"So smiling so tender, so fresh and so fair—"*

TANOUS, JOSEPH PAUL—  
*"My own thoughts are my companions."*

TENGLUND, ELEANOR—Athletic Association, 2, 3; Wayside, 4; Sewing Class Play, 1; State Honor League.  
*"Golden hair like sunlight streaming on her spotless brow."*

THIERMAN, CHARLES—  
*"Men of few words are the best men."*

THOMAS, MARY—  
*"She laughed and every heart was glad."*

THOMPSON, EVERETT L.—  
*"He is a man of three words, Love, life, and laughter."*

TILLER, MAXWELL—  
*"The ladies call him sweet."*

TUTTLE, PAUL ORVEL—  
*"Awake, arise or be forever fallen."*

TYLER, STANLEY—Athletic Association, 3, 4.  
*"He was want to speak plain and to the purpose."*

VARLEY, LEONE—Athletic Association, 1; Cheerleader, 2, 3, 4; Treasurer of Sophomore Class; Dramatic Club, 1, 2, 3; Decoration Committee of Prom, 3; Decoration Committee of Football Dance, 4; Freshman Competitive Assembly; Sophomore Competitive Assembly; Junior-Senior Play; Vice-President of Senior Class; Bicentennial Play.

*"Her gesture, motion and her smiles, Her wit, her voice the heart beguiles."*

WAGNER, HAROLD—Christmas Play, 1; Student Police, 3; Manager of Track, 4; Athletic Council, 4.  
*"Hell is empty, all the devils are here."*

WARD, JOHN—  
*"I have a heart with room for every joy."*

WEBER, MARY B.—  
*"For every why, she had a wherefore."*

WENKE, MARY — Home Economics Play, 4; Congress Staff, 4; Home Making Club, 4; Yearbook Staff, 4.  
*"To make the whole world smile Like touchstones is her wit."*

WETMORE, JULIA—Wayside, 2, 4; Basketball, 1, 2; Hiking Club, 1, 2; Competitive Assembly, 2; Dramatic Club, 2; Committee for Football Dance.  
*"Late, late, would that Peter will hold the gate and await thy arrival!"*

WEPASNICK, WANDA H.—Wayside, 4; Home Economics Club, 4.  
*"Calm, contented, serene and sweet."*

WHITEHEAD, ETHEL L.—Dramatics, 1; Home Economics Club; Wayside, 4.  
*"Officious, innocent, sincere, Of every friendless name the friend."*



WHITE, ROBERT GEORGE—President, Senior Class; State Honor League.

*"The world means something to the capable."*

WILCOX, GEORGE—Athletic Association, 2, 3, 4; Congress Staff, 4; Yearbook Staff, 4; State Honor League.

*"Whatever he did was done with so much ease."*

*In him alone 'twas natural to please."*

WILDAY, EVELYN—Athletic Association, 1, 2, 3, 4; Wayside, 3, 4; Dramatic Club, 1; Hiking Club, 1; Committee for Wayside Party, 4; Decoration Committee for Football Dance.

*"Laugh and the world laughs with you."*

WILLIAMS, MARION MATHER—

*"So good natured and friendly is she, It's a pleasure with her to be."*

WILLIAMS, J. STEWART—Athletic Association, 1, 2; Student Police, 1; Football Varsity, 1, 2, 3, 4; Football Captain, 4; Lettermen's Club, 1, 2, 3, 4; President Lettermen's Club, 3; Track Varsity, 1, 2, 3, 4; Track Numerals, 3, 4; Softball, 3; Inter-Class Basketball, 1, 2; Varsity Basketball,

3, 4; Junior-Senior Competitive Assembly, 3; Cumulative Letter, 3; Sectional Track Numerals, 4.

*"Where he succeeds"*

*The merit's all his own."*

WRIGHT, EDNA—Glee Club, 1, 2; Fredonia Music Fete, 2; Spring Concert, 1, 2; Wayside, 3, 4; Athletic Association, 1.

*"The gentleness of the Gods go with thee."*

WRIGHT, WILLIAM H.—

*"Give me some music; music, moody food."*

YAHN, ARTHUR, JR.—State Honor League.

*"I think, therefore I am."*

ZAWADA, STELLA—Wayside, 3, 4; Home Economics Club, 4; Athletic Association, 2, 3, 4; Parent-Teachers' Entertainment, 1.

*"Ease with dignity."*

ZECHES, FREIDA ALBERTA—

*"It is better to be called late-learned than unlearned."*

## Class Officers of the Class of '33

### 1929-1930 AS FRESHMEN

President ..... Jack Allen  
Vice-President ..... Patricia Stull  
Secretary ..... Ruth Bowersox  
Treasurer ..... Billy Donnelly  
Student Council ..... Jay Finley  
Class Advisor ..... Mary Fitzgerald

### 1931-1932 AS JUNIORS

President ..... Everett Lord  
Vice-President ..... Grace Runals  
Secretary ..... Martha Coon  
Treasurer ..... Ralph Sanzo  
  
Student Council  
Catherine O'Donnell  
Arthur Yahn  
Marcia Shank  
Class Advisor ..... Jennie Wombaugh

### 1930-1931 AS SOPHOMORES

President ..... William Donnelly  
Vice-President ..... Georgia O'Dell  
Secretary ..... Guy Ross  
Student Council ..... Marcia Shank  
Jack Cain  
Class Advisor .... Elizabeth Herzog

### 1932-1933 AS SENIORS

President ..... Robert White  
Vice-President ..... Leone Varley  
Secretary ..... Virginia Everhart  
Treasurer ..... Floyd Rogers  
Student Council  
Priscilla Oakleaf  
Charles Shoemaker  
Grace Runals  
Ray Marlatt  
Class Advisor ..... Lotta Hobart



# History of the Class of '33

Hear ye, hear ye, O, most honorable judge, these two hundred people robed in yon black gowns and caps wish to receive degrees to pass from these portals of learning to whatever fortune awaits them,—success, we hope. At your request I shall read, in your most honorable presence this tabulation of their activities and behavior during their four years of attendance here.

In September of 1929, these unworthy ones committed the presumptuous act of entering into these sacred halls. They survived their regents and entered their Sophomore year, then their Junior year with a feeling of worldly wise sophistication (for had they not passed the dreaded Geometry and Caesar?)

Again sobered by the final June reports these people now so desirous of their independence returned the following September.

Oh Honorable Judge, I hesitate to report their great offenses.

In October a group of eleven men was chosen to carry our banner upon the grid-iron; after a most successful season the students gaily waltzed to the music of "Johnny Fitzgerald" at the annual football dance.

Then came Christmas vacation with its mornings of blessed sleep, and after, (does not the day of reckoning always come?) regents arrived with due pomp and ceremony of "give only information asked for," Oh for a bit of information!

Sir, this year they organized one of the most successful basketball teams that has ever played in our gymnasium; that was not enough, for in April track began with many participants.

One evening in March I met a group of students dressed in Roman regalia, upon demanding the reason for such conduct I was informed, with great dignity, that they were about to attend the Virgil Banquet, and that if I had had any of the classics I might go also—an invitation which I accepted without hesitation.

June drew near, Spring Day came. The girls' and boys' Glee Clubs and Orchestra played and sang sweet music rivalling even that of Orpheus.

As summer came with its warm and balmy days the annual epidemic of Spring Fever spread through the student body and the faculty. Visions of the old swimming hole danced upon the pages of the chemistry books. Again were there hours of merry making for a large group attended the Wayside dance and the Junior-Senior prom.

The orgie, Regents, again arrived. A silent prayer could be read in the eyes of the teachers as well as the students during each three hours of misery. The thoughts of "will I ever survive this day and if only I can remember what she told us in class last week," ran through the already confused thoughts.

Your honor, I have read this testimony, what is your verdict?

Acquitted!

This day of June 27, 1933, we do give to you your degrees to pass out from our doors of learning into the world, where each one of you will become but a cog in the wheel of its progress and where existence is the survival of the fittest.

O you the class of 1933, may success and happiness be yours.

*Pax vobiscum*

MARTHA COON '33.



## Senior Superlatives

|                     |                                   |                     |
|---------------------|-----------------------------------|---------------------|
| Priscilla Oakleaf   | <i>Done the most for O. H. S.</i> | Jack Allen          |
| Catherine O'Donnell | <i>Best all round</i>             | Anthony Rogers      |
| Grace Runals        | <i>Most Popular</i>               | Everett Lord        |
| Lucille Feigel      | <i>Best Sport</i>                 | Richard Laverty     |
| Emily Lloyd         | <i>Best Looking</i>               | Justus Garr         |
| Helen Oelkrue       | <i>Best Dancer</i>                | Everett Thompson    |
| Jane Fuller         | <i>Best Athlete</i>               | James Fitzpatrick   |
| Marion Williams     | <i>Best Natured</i>               | Iver Johnson        |
| Marion L. Rogers    | <i>Biggest Bluffer</i>            | William J. Donnelly |
| Virginia Everhart   | <i>Biggest Flirt</i>              | Jack Raymond        |
| Mary Aurino         | <i>Biggest Cut-up</i>             | Harold Wagner       |
| Mary Colligan       | <i>Cleverest</i>                  | Richard McLaughlin  |
| Burnice Ehman       | <i>Biggest Talker</i>             | Robert Linehan      |
| Virginia Dawson     | <i>Busiest</i>                    | Roy Card            |
| Delores Meiers      | <i>Most Sophisticated</i>         | John Hildebrandt    |
| Eleanor Tenglund    | <i>Fairest Blond</i>              | Ray Marlatt         |
| Caroline Boyd       | <i>Most Studious</i>              | Richard Samsel      |
| Edna Fay            | <i>Most Nonchalant</i>            | Paul Riegraf        |
| Alice Longnecker    | <i>Most Talented</i>              | Charles Shoemaker   |
| Jane Gibbons        | <i>Most Kiddish</i>               | Billie C. Donnelly  |
| Sara Ethridge       | <i>Hardest Grind</i>              | Arthur Yahn         |
| Mary Noonan         | <i>Biggest Eater</i>              | Michael Kneiser     |
| Evelyn Hirst        | <i>Sleepiest</i>                  | Elmer Smith         |
| Ruth Martin         | <i>Best Musician</i>              | Beresford Ellis     |
| Julia Wetmore       | <i>Slowest</i>                    | Paul Brundage       |
| Mary Wenke          | <i>Wittiest</i>                   | Claude Karl         |
| Ruth Keeney         | <i>Most Modest</i>                | Earl Osborne        |
| Doris Light         | <i>Most Pessimistic</i>           | James Quigley       |
| Wilma Karl          | <i>Most Optimistic</i>            | Tony DeRose         |
| Anne Driscoll       | <i>Most Bashful</i>               | William MacDuffie   |
| Marion Muntz        | <i>Worst Man Hater</i>            |                     |
|                     | <i>Worst Woman Hater</i>          | Leo Schnell         |
| Esther Smith        | <i>Most Stubborn</i>              | Richard Long        |
| Mareta Ruggles      | <i>Sweetest</i>                   | Fredrick Garr       |
| Leone Varley        | <i>Youngest</i>                   | Robert Ewing        |
| Martha Coon         | <i>Most Ambitious</i>             | John Kloc           |
| Janice Klock        | <i>Biggest Fusser</i>             | Malcolm Dempsey     |
| Evelyn Wilday       | <i>Jolliest</i>                   | Kenneth Miller      |



# Ye Class Tournaments

Hear ye, Hear ye, the Good King Herbert hath proclaimed a tournament which will take place on the morrow in ye Bradner Stadium. Any bold knight who wishes may take part. Sir Fitzpatrick and Sir Rogers will defend the north end of ye field while Sir Chrzan and Sir Kane will uphold the south end. All ye knights and fair ladies are invited to attend.

The first event will be a jostling match scheduled for 9:30 A. M. by the sun. Sir DeRose and Sir White will attempt to unseat Sir Dempsey and Sir Kloc. The prizes in the form of medals will be awarded by Lady O'Donnell, Lady Martin, Lady Ehman, and Lady Ethridge.

Following the jostling Sir Robert and Sir Marshall Dodge will hold a breakfast party at their castle on ye old State Street. Among the guests will be Lady Wilday and Sir Ewing, Lady Light and Sir McLaughlin, Lady Runals and Sir Lord, Lady Coon and Sir Allen, and Lady Oelkrue and Sir Garr.

At 11:30 promptly the Good King Herbert will enter the Arena on his coal black charger, to make the official opening of the games. When he drops the customary white handkerchief the parade will begin. Entering from the west end, the parade will be led by Lady Klock who has the place of honor next the king. She will be escorted by Sir Donnelly, Sir Raymond, Sir Johnson, Sir Geiger, and Sir Kinney, those bravest of the king's courtiers. The attendants will include the fair maidens Lady Tenglund, Lady Feigel, Lady Henhawk, and Lady Wenke. In the reviewing stand, next the king, will be Lord High Stableman, Burdick and the newly appointed food-taster, Sir Flaherty. Ye noon banquet will be served at ye sign of ye Club Royale, in charge of Squire Bosler and Squire Fletcher. In the afternoon the tourney will start at 1:30, when Herald Heinz shall blow his trumpet. The Knights of the Blue Garter, Sir Cappelletti, Sir Fitzpatrick, Sir Carter and Sir Bichelany will engage the knights of the Round-table, Sir Karl, Sir Lang, Sir Laverty, and Sir Linehan in a tourney of leap frog. The winner will compete against that well known organization, the Knights of the Bachelor Club.

At 2:30, the well known billiard star, Sir Gene Robarts of Taylor, will entertain the company with a special left handed, blindfolded exhibition of ping-pong, the new game invented by Squire John Proudfoot. At 3:00, the big event of the tournament is scheduled, ye polo game. The Red Knights, under Sir Fitzpatrick and Sir Rogers will probably include Sir Earl Osborne, left half-wit, Sir Quigley, the other half-wit, and Squire Riegraf will probably hold down the position of left out. The Reds have been drilling steadily for many years and it is anticipated that they will put up a good struggle. The Blue Knights under the direction of Sir Chrzan and Sir Kane, however, have a strong outfit this year.

At the lower end of ye Arena there has been erected a large Spa, Ye Olde Fountain of Youthe, operated by Sir Langs, the king's registered soda jerker. A bevy of attractive waitresses stand ready at all times to look after the customer's needs. The fair maids are called Madelyn, Delores, Priscilla, Julia, Wanda, and Frieda. Light lunches can be



secured at any time during the day and they will undoubtedly be delicious as they are to be prepared by the Royale Chef Dawson assisted by Ye Royale kitchen knave Clancy. Everyone is cordially invited to drop in whenever their appetites warrant it. At intervals during the day a stupendous performance of mysticism will be put on by the prince of the magicians, Lord high faker Yahn, assisted by his able henchman Hildebrandt.

As a fitting close for ye day the entire student body of Ye Olde Olean High Schoole aided and abbetted by Ye faculty under the leadership of his Physic-y Lord Wesley Smith and her Latinc-y Lady Oliver, will engage in a free-for-all pillow fight. Ye hearse with Lord High Undertaker Card will be ready to remove all ye unclaimed bodies to Ye morgue where a special prayer service will be said by Lord High Priest Dwalibee, after which the bodies will be committed to ye grave where Ye Olde Schoole building once stood. Flowers are gratefully declined.

PRISCILLA OAKLEAF

RICHARD McLAUGHLIN





## Class Will

We, the Crusaders of the Class of "33", being mentally sound and capable, do hereby will and bequeath our real and personal effects to the Pages of "34". We sincerely hope that they will use and care for them with extreme thoughtfulness and derive therefrom as much pleasure as we have.

FIRST: To the Junior Class the sound advice and good judgment which the faculty has bestowed upon this year's Senior Class.

SECOND: To Wesley Leonard, Jim Burdick's meager physique.

THIRD: To Purcy Kinsel, Jane Fuller's wide spread athletic prowess.

FOURTH: To "Kate" Herold, Helen Oelkrue's inseparable chew of gum.

FIFTH: To "Pete" Pettit, Earl Osborne's ability to keep quiet.

SIXTH: To Paul Kane, "Packy" Fitzpatrick's basketball ability.

SEVENTH: To Dick Sain, "Chuck" Bordonaro's pleasing, and smilingly radiant personality.

EIGHTH: To William Durkin, "Walt" Chrzan's bottle of olive oil.

NINTH: To Melvin Fremming, Elmer Smith's school spirit.

TENTH: To Betty Harter, Betty Jobe's beautiful red coifure.

ELEVENTH: To Malcolm Johnson, Art Yahn's iron-like muscles.

TWELFTH: To Vivian Smith, Wetmore's, "Dick."

THIRTEENTH: To Marilyn Wright, Mareta Ruggle's exact timeliness.

FOURTEENTH: To William O'Reilley, "Rusty" Garr's manly beauty.

FIFTEENTH: To Charles Snyder, Gene Robart's bag of playful little tricks.

SIXTEENTH: To Albert Seefried, "Dick" McLaughlin's manly character.

SEVENTEENTH: To Margaret Reid, Caroline Boyd's many artful and scholarly talents.

EIGHTEENTH: To Billy Shank, Douglas Bossler's way with the ladies.

NINETEENTH: To "Bob" Murrin, a permanent tardy slip.

TWENTIETH: To "Stewy" Williams, Richard Samsel's many high and praiseworthy ideals.

TWENTY-FIRST: To "Don" Johnson, Bob Dodge's dancing form.

TWENTY-SECOND: To Martha Redding, Mary Colligan's dancing ability.

TWENTY-THIRD: To "Peg" Harris, Virginia Everhart's basketball prowess.

TWENTY-FOURTH: To Edna McBride, Sara Ethridge's calm and collected manner.

TWENTY-FIFTH: To "Bob" Peters, John Kane's masterful will over the fairer sex.

TWENTY-SIXTH: To Jimmy McCready, Miss Hobart's patience with Claude Karl.

TWENTY-SEVENTH: To Harold Kamler, Bob Ewing's one big asset, his Ford.

TWENTY-EIGHTH: To Mrs. Morris, another Perkins.

TWENTY-NINTH: To Mr. Frey, someone to replace Robert Linehan.

THIRTIETH: To Miss Prosser, a permanent spectator's complimentary ticket.

JACK ALLEN

EMILY LLOYD









## Junior Class History

As Freshmen and Sophomores our interests were in our studies, and in the affairs of the school. Now that we are Juniors, we try, without much success, to be a good example for the underclassmen, by conducting the affairs of the class to the best of our ability.

The Junior Girls won the Soccer championship this year. The Junior Boys have won laurels for themselves and the school by their participation in school athletics.

The meetings of our class were well attended, and as usual the class voted to have Junior Pins. Now plans are being carried out for the best part of the Junior year, the entertainment which we give to the Seniors, as a farewell.

We have done our best, and hope that the Junior Class of 1934 will have as much enjoyment as we have had this year.

### CLASS OFFICERS

|                              |                    |
|------------------------------|--------------------|
| <i>President</i> .....       | Wesley Leonard     |
| <i>Vice-President</i> .....  | Jane Hannon        |
| <i>Secretary</i> .....       | Purcey June Kinsel |
| <i>Treasurer</i> .....       | Billy Donnelly     |
|                              | Bernard Dunne      |
| <i>Student Council</i> ..... | Ruth Perkins       |
|                              | Tom Previgilion    |
| <i>Class Advisor</i> .....   | Miss Wombough      |



SOPHOMORES

19



35







## Sophomore Class

The Sophomore class has been unable to have any class activities, due to the overcrowded condition in the school, but its members, who number approximately four hundred, have displayed remarkable school spirit in accepting such situations in a cheerful, sportsmanlike manner.

### OFFICERS

|                              |                                   |
|------------------------------|-----------------------------------|
| <i>President</i> .....       | James Crowley                     |
| <i>Vice-President</i> .....  | Jane Crowley                      |
| <i>Secretary</i> .....       | Elizabeth Harter                  |
| <i>Treasurer</i> .....       | George Hannigan                   |
| <i>Student Council</i> ..... | Alfred LaBella—Ellen Jane Renshaw |
| <i>Faculty Advisor</i> ..... | Elizabeth Herzog                  |









## Freshman Class

The freshman class, which is composed of about five hundred members, has acclimated itself to the crowded conditions of Olean High in a manner, which deserves a great deal of credit. Although they have not been able to carry on any social function, the members of the class of '36 have taken an active interest in sports and other school extra curricular activities, which are open to them.

### OFFICERS

|                              |                    |
|------------------------------|--------------------|
| <i>President</i> .....       | Mortimer McElfresh |
| <i>Vice-President</i> .....  | Mary Fitzpatrick   |
| <i>Secretary</i> .....       | Ann Hannigan       |
| <i>Treasurer</i> .....       | Thomas Gabriel     |
| <i>Student Council</i> ..... | Eleanor Runals     |
| <i>Faculty Advisor</i> ..... | Mary Fitzgerald    |









## High School Unit at School No. 5

Because of the overcrowded condition in the High School it was necessary to organize a high school unit at School Number Five beginning with the second semester of the present school year. Eighty-five pupils who completed their elementary work in Schools Number Four, Number Five, and Number Seven in January, 1933, constitute the high school unit at School Number Five.

A keen rivalry developed between the Freshman group at High School and School Number Five when the girls and boys of the schools met in volleyball and basketball contests.

We feel indebted to those who organized the high school unit at School Number Five so we had suitable space for school work.

In like manner we look forward with eagerness to join the large group at High School in September, 1933.

### CLASS OFFICERS

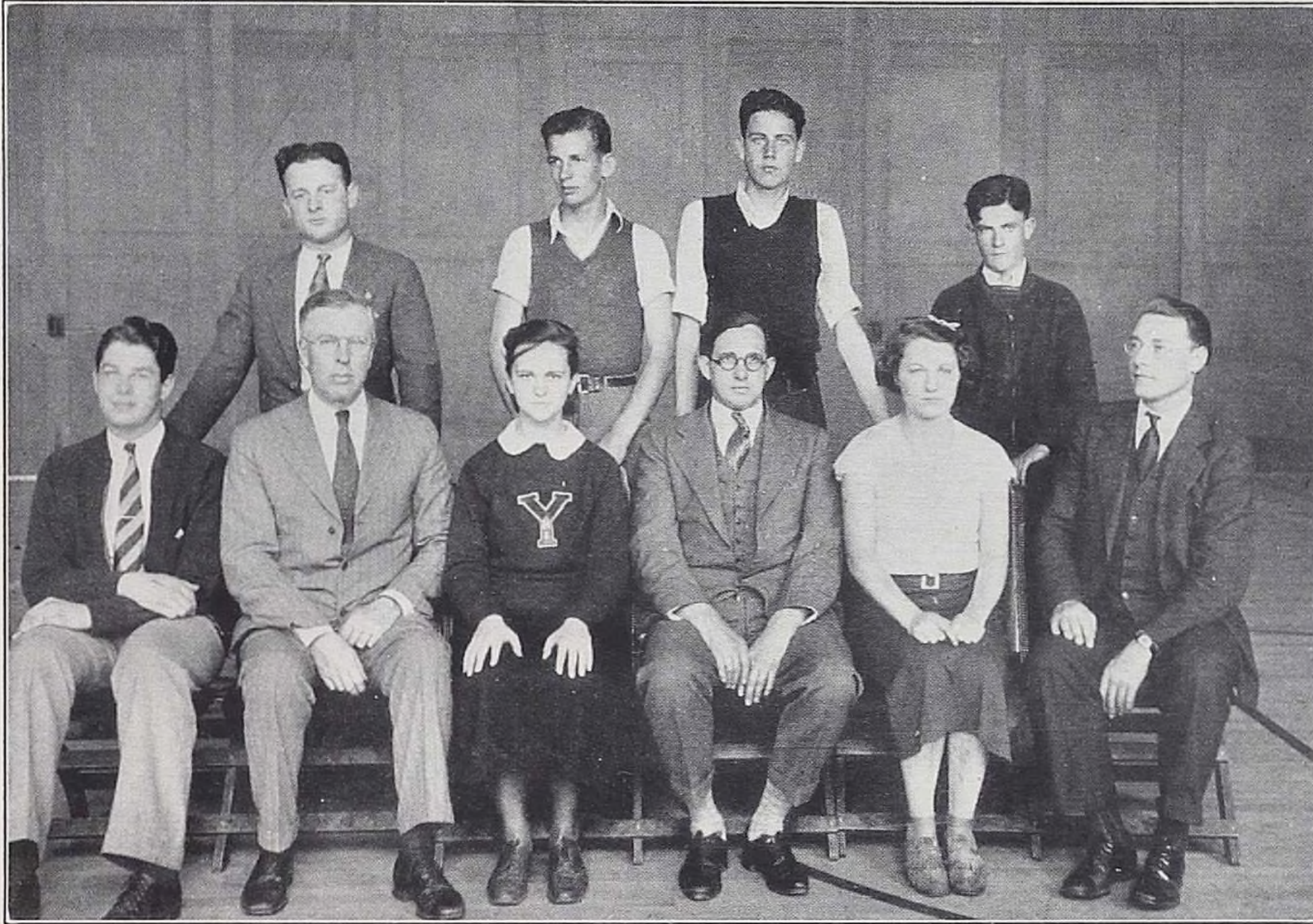
|                                  |                |
|----------------------------------|----------------|
| <i>President</i> .....           | Rebecca Sipe   |
| <i>Vice-President</i> .....      | Richmond Klamt |
| <i>Secretary-Treasurer</i> ..... | Paul Donnelly  |



# sports







## Athletic Council

One of the oldest and most responsible organizations of the Olean High School is the Athletic Council. Their duty is to plan and carry out all athletic activities during the school year. This group consists of a president, vice-president, secretary, managers of football, basketball, track and four faculty members.

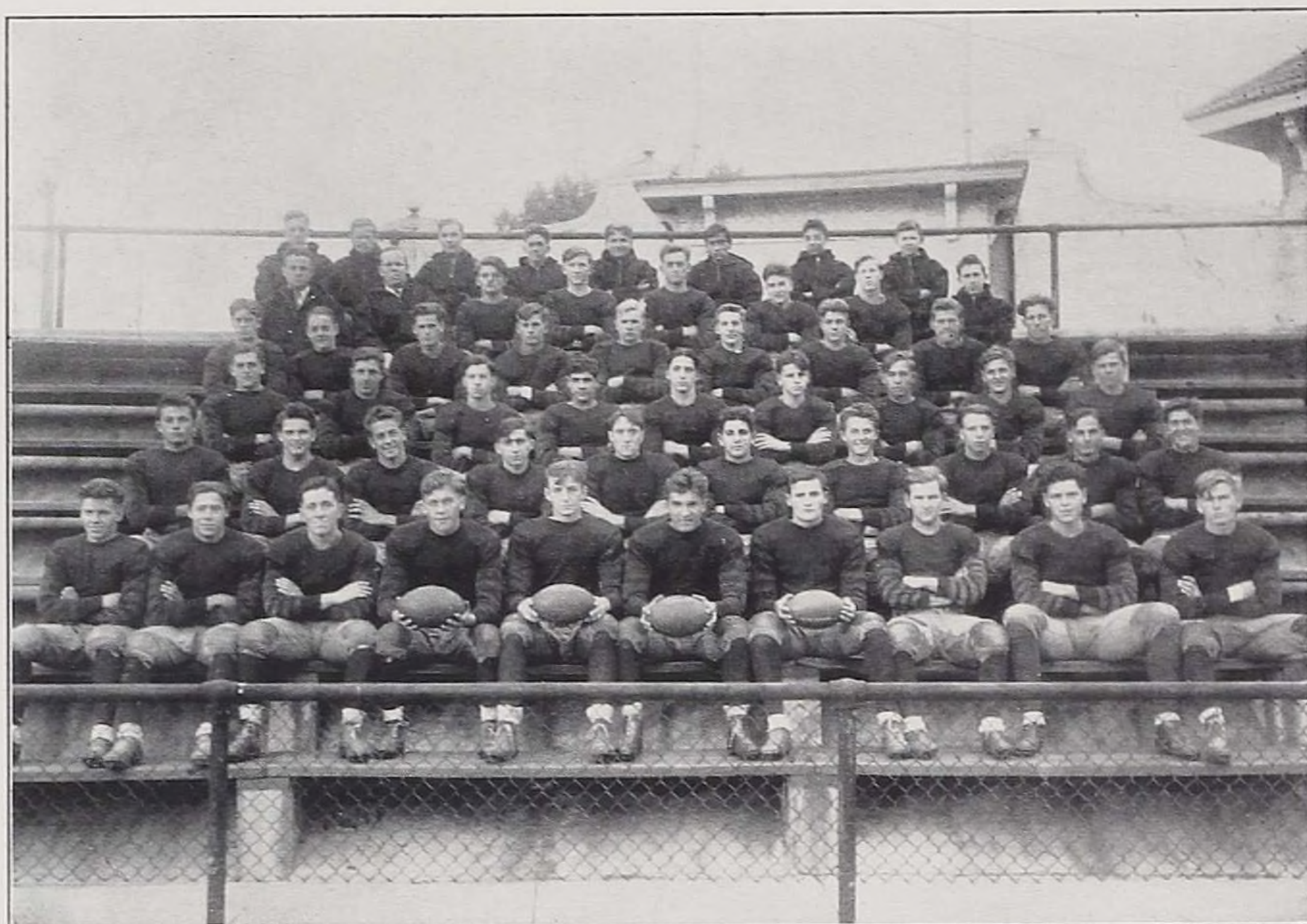
The election of the student officers takes place in the early part of the fall semester—at this time the entire membership of the Athletic Association meets. Auditing of bills, awarding of insignias, approving of coaches' recommendations for purchase of equipment and other routine business is carried out at regular weekly meetings held at the close of school every Monday.

This council can be complimented for a new innovation originated during the past year. All coaches, captains and principals of teams participating in the Cattaraugus County Basketball League were the guests at a banquet held in the school cafeteria for the purpose of promoting closer friendship and sportsmanship among the vicinity high schools. Due to the hospitality shown by the guests and the success of the event it is anticipated that it will occur annually.

### OFFICERS

|                                  |              |
|----------------------------------|--------------|
| <i>President</i> .....           | Jane Fuller  |
| <i>Vice-President</i> .....      | Paul Kane    |
| <i>Secretary</i> .....           | Ruth Perkins |
| <i>Permanent Treasurer</i> ..... | Mr. W. Smith |





## Football

Under the guidance of Coaches Frey and Utecht, the Red and Gold football team enjoyed a fairly successful season. Nine games were played, five resulting in victories for Olean.

The Crimson opened the season against Little Valley and handed the County Seat team a decisive 46 to 0 defeat. The following week a strong Allegany team invaded the Stadium but went down to a 13 to 9 defeat at the hands of the Crimson squad.

The Crimson met its first defeat when Dunkirk came to town and took a thrilling 13 to 0 victory. Traveling to foreign soil the next week the Crimson suffered their worst defeat of the season, a 32 to 0 setback at the hands of a big and fast Lackawanna team.

On returning to their home grounds the Crimson could not shake the jinx that hung over them and dropped a 6 to 0 decision to Depew.

Injuries and hard luck hampered the Crimson against Jamestown and the Swede City took a 13 to 0 verdict over the locals.

The Crimson finally broke their losing streak when they took Hornell by a 12 to 0 score.

Armistice Day was a big day for the Olean squad. They met Bradford High in the most important game of the season and succeeded in defeating their rivals by a 19 to 7 score.

To complete the season impressively the Crimson and Gold traveled to Salamanca and completely routed the Reservation City by a score of 51 to 7.

Twenty-four letters were awarded to the following players: Captain J. Fitzpatrick; M. Barbaro, M. Borst, G. Butchello, W. Chrzan, E. Chevassu, N. Carter, C. Clancy, T. DeRose, J. Garr, E. Kamery, K. Kamery, W. Liwa, H. McGraw, F. McFadden, K. Miller, T. Palumbo, R. Peters, W. Padlo, L. Raymond, T. Rogers, L. Schnell, S. Williams, J. Rucinski and Wm. C. Donnelly, Manager.





## Basketball

With the return of four lettermen, the Olean High School Quintet gained the most impressive record in recent years. At the end of the season, the Crimson Quintet had thirteen victories and three defeats to show for their efforts. The trio of losses came on foreign courts and the home record remained unmarred.

The proteges of Coaches Francis Frey and Norman Utecht added the coveted Cattaraugus County title to their laurels by an eleven point victory over the Salamanca High School Five. However, in the sectional semi-final Dunkirk halted the progress of the Crimson in further State competition by a 29-25 victory after a hectic struggle. The Red and Gold Five outplayed the winners, and their inability to convert seemingly easy shots proved fatal. An incipient rally in the last two quarters proved unsuccessful. The game was played at the Randolph Central High School Gym.

After keeping their record intact for the first nine games, five of which were County League encounters, the Ye-O-Men were subdued by the underated Allegany team at Allegany. Bradford and Dunkirk Fives were the only others to repel the Crimson attacks and win.

Among those to taste defeat at the hands of Olean were Jamestown and Franklinville (Class B, State Champs). It was the first time in five seasons that a Crimson team was able to repulse Jamestown. Bradford, traditional rivals, broke even with the Crimson—each having one victory.

To conclude an enviable record, the Olean High School team was honored with four places on the All-East team chosen from various teams competing in the Eastern Division, Cattaraugus County Basketball League. These "Crimsoners" were Jack Cain, James Fitzpatrick, Justus Garr, and Captain Tony Rogers. In the All-East versus All-West contest the former proved superior. Nine varsity letters were awarded.





## Track Team

At the time of editing this data, track was at a standstill. One of the smallest squads in the history of the school numbering less than twenty-five answered the call for candidates issued on Tuesday, April 25. To add to the chagrin of Coaches Hookey Frey, and Norm Utecht prevailing inclement weather made it impossible for the aspirants to go through their paces outdoors. Therefore, with the Alfred Scholastic Meet only ten days off, the squad was confined to indoor training.

The squad was replete with newcomers as only five lettermen were among those to report. However, many of the beginners appeared to be very excellent material and a team of at least a mediocre calibre was expected.

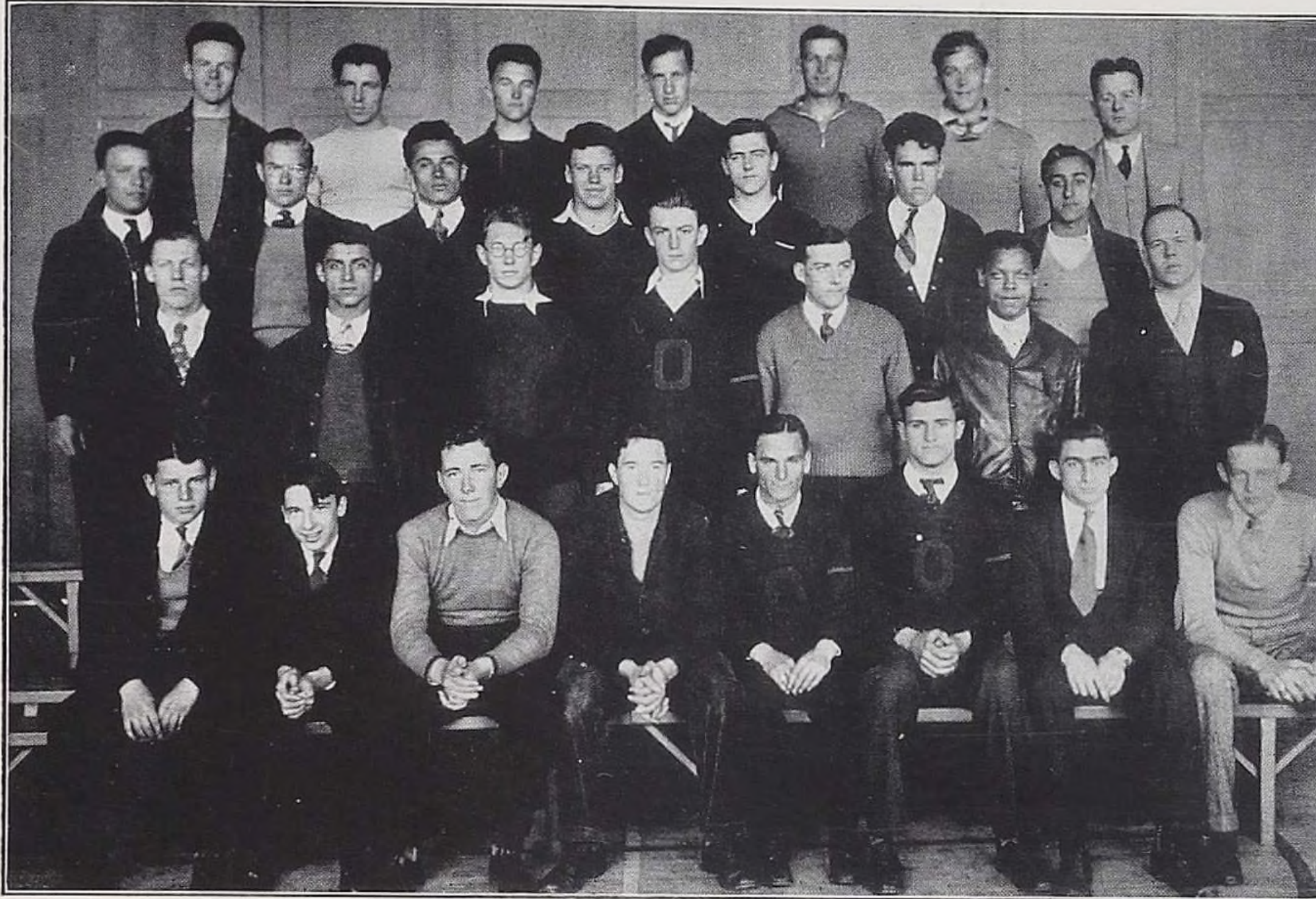
The Cattaraugus County Meet and the Sectional Meet were scheduled for May 27 and June 3 respectively to take place at the Bradner Stadium.

The five lettermen to report were Jack Lee, Miler; Joseph Pezzimenti, 220 and relay; Tony Palumbo, relay; Richard McLaughlin, high jumper, hurdler, and M. Barbaro, 100 yard dash and relay. Stewart Williams, veteran 440 man, was expected to report in a few days.

Among the new comers to report were Noble Johnston and Steve Blazejewski, milers; both freshman gaining experience for their later years. The half-mile post, left vacant by graduation, will be contested by Nick Rogers, Jim Brooks and Butchello. James Nolan and Malcolm Troup are making bids for shorter distances post. Gaylord Frost and Harold Weaver will bear the burden in jumping. Herb Colomy and Bernie Johnston, both experienced, will be represented in the pole vaulting while Carl Fisher will be putting the shot.

Other track meets anticipated were Class-Meet, Tri-City meet, County meet, and Sectional meet.





## Lettermen's Club

The main incentive of the Olean High School Lettermens' Club is to promote mutual friendship among the participating athletes and to emphasize the honor and significance of being awarded a school insignia.

Application for this organization is limited to those who have been awarded varsity insignias or twenty-point cumulative "O's". Therefore, the distinction of being a member is heralded as a great honor.

Due to the awarding of letters to a greater number of varsity participants than in former years the enrolled membership of the club at present is large.

The most important of the unlimited activities of the organization is the annual Lettermens' Banquet sponsored by the Olean High School Athletic Association. This event is held at the Olean House just prior to examination week.

The election of officers took place on Thursday, April 27, with assistant coach, Norman R. Utecht, presiding.

### OFFICERS

|                             |                 |
|-----------------------------|-----------------|
| <i>President</i> .....      | Mike Barbaro    |
| <i>Vice-President</i> ..... | Tony Rogers     |
| <i>Treasurer</i> .....      | Jack Lee        |
| <i>Secretary</i> .....      | Butch Butchello |

### OTHER MEMBERS

|                   |                  |                |                    |
|-------------------|------------------|----------------|--------------------|
| James Fitzpatrick | Stewart Williams | Justus Garr    | Walter Padlo       |
| Jack Cain         | Irwin Chevassu   | Billy O'Rielly | Morse Borst        |
| John Rucinski     | Leo Schnell      | Iver Johnson   | John Dean          |
| Joe Pezzimenti    | Kenneth Miller   | Alvin Ubelhear | Richard McLaughlin |
| Tony Palumbo      | Tony DeRose      | Joe Malone     | William Wright     |
| Fred McFadden     | Charles Clancy   | Walter Chrzan  | Robert Peters      |
| Walter Liwa       | Leonard Raymond  | Carl Fisher    | Howard McGraw      |





## Volleyball

For perhaps the first time in the history of volley ball in our Olean High School, great spirit and excitement was displayed in the playing off of the games. The Sophomores won the honor by a very small margin, the Freshmen girls giving them the closest competition.

## Track

Track like baseball and tennis is yet to come. After lying dormant for a number of years, this activity is once more to be resumed in Olean High School.

## Basketball

Basketball proved to be the most popular game of the season, with the Sophomores winning in the finals. The Sophomores, however, had close competition.







## Hiking Club

The girls put on their old clothes, pack a lunch, and are off for a bit of wandering across the country every Saturday.

## Baseball

The completion of the year book finds this year's baseball still in the embryo stage.

## Tennis

The tennis games for the year are to be played off at the School 5 court. Beginners were taught in the High School gymnasium.

## Soccer

The Junior soccer team showed its superiority in winning from the Freshmen, Sophomores and Seniors in the Preliminaries. In the finals the games proved very close and exciting, the Juniors winning from the Sophomores by one point and from the Seniors also by one point.











## Student Council

### OFFICERS

|                             |                |
|-----------------------------|----------------|
| <i>President</i> .....      | Grace Runals   |
| <i>Vice-President</i> ..... | Ruth Perkins   |
| <i>Secretary</i> .....      | Alfred LaBella |
| <i>Treasurer</i> .....      | Ray Marlatt    |

*Seniors*—Ray Marlatt, Priscilla Oakleaf, Grace Runals, Charles Shoemaker.

*Juniors*—Bernard Dunne, Ruth Perkins, Tom Previgian

*Sophomores*—Alfred LaBella, Ellen Jane Renshaw

*Freshmen*—Ann Hannigan

Throughout the year, the Student Council has continuously and consistently busied itself with the promotion of good standards of expression and of procedures for the student body. At the opening of the school year, the Council took charge of the selection of a capable staff of Cheer Leaders. After a series of "try-outs," which ran through the early part of the football season, the following were chosen: William Fitzpatrick, Alfred LaBella, Elizabeth Ray, and Leone Varley.

A staff of Student Police was next chosen, of which Ray Marlatt was appointed "Chief."

At the opening of the second semester, the members of the Student Council acted as guides and counsellors for the incoming "freshies" and warmed many a fluttering and troubled freshman heart by unfailing patience and courtesy.

Because of the lack of an auditorium and a difficulty, this year, in selling entertainment tickets, the student assemblies were regretfully "passed up." We live in hope of a new auditorium, sometime.

The last service of the year will be that of compiling the data for and making the awards of the Twenty-Point-Letters, for participation in student activities.





## Wayside

The fair maidens of the Olean High School have enjoyed many an interesting meeting of Wayside, as they have meandered along the path of 1932 and 1933.

A party was held in the gym one cold blustery evening in March. Dancing and stunts afforded a happy time for the seventy-five who attended.

When the fields were blooming in May, the Wayside Spring Party was enjoyed by many a graceful maiden and gallant youth. It was a delightful occasion, the outstanding social event of the year.

The gentle maidens who have directed the affairs of Wayside this year are:

### OFFICERS

|                             |               |
|-----------------------------|---------------|
| <i>President</i> .....      | Jane Fuller   |
| <i>Vice-President</i> ..... | Helen Oelkrue |
| <i>Secretary</i> .....      | Grace Runals  |
| <i>Treasurer</i> .....      | Caroline Boyd |
| <i>Advisor</i> .....        | Miss Hobart   |





## Wayside Members (1932-33)

|                     |                      |                    |
|---------------------|----------------------|--------------------|
| Abbott, Rose        | Johnson, Aletha      | Olds, Mary         |
| Ahrens, Dorothy     | Karl, Wilma          | Olson, Alice       |
| Ball, Jean          | Keeney, Ruth         | Ostergard, Betty   |
| Boyd, Caroline      | Kelly, Anne          | Peake, Charlotte   |
| Bozard, Bertha      | Krannock, Mary       | Ruggles, Mareta    |
| Bridge, Frances     | Kuzak, Anne          | Runals, Grace      |
| Chiapusso, Mary     | LaCavera, Nina       | Rucinski, Martha   |
| Clark, Florence     | Lane, Ruth           | Schaffer, Helen    |
| Cords, Helen        | LeValley, Virginia   | Seeley, June       |
| Davis, Grace        | Light, Doris         | Shewairy, Mamie    |
| Dawson, Virginia    | Lloyd, Emily         | Sirianni, Madeline |
| Ethridge, Sara      | Longnecker, Alice    | Smith, Vivian      |
| Feigel, Lucille     | Lundberg, Harriet    | Stier, Esther      |
| Ford, Veronica      | Mansour, Mary        | Taylor, Alice      |
| Fuller, Jane        | Marlatt, Ruth        | Tenglund, Eleanor  |
| Gibbons, Jane       | Marra, Frances       | Travis, Roberta    |
| Gill, Catherine     | McEvelia, Phyllis    | Walsh, Katherine   |
| Grear, Mary         | McLaughlin, Mary     | Weaver, Helen      |
| Hannon, Jane        | Meredith, Margie     | Wepasnick, Wanda   |
| Heysel, Janet       | Miesel, Rita         | Wilday, Evelyn     |
| Henneman, Catherine | Moricca, Concepta    | Wright, Edna       |
| Ibaugh, Elizabeth   | O'Donnell, Catherine | Zawada, Stella     |
| Jobe, Betty         | Oelkrue, Helen       |                    |



## Virgil Banquet

The Annual Virgil banquet was held March 17, in the school cafeteria for the Virgil students and those members of the faculty who were their guests.

Each member of the group came according to custom, dressed as a character of Roman History or as a deity.

A delightful program of entertainment was put on both by the guests and the members of the Cicero class who acted as slaves. This group included Ruth Tothill, Mary Jane Van Campen, Margaret Ellison, John Golden, and James Driscoll.

Priscilla Oakleaf was general chairman of this affair and was assisted by several committees from the class. Richard McLaughlin made a very impressive master of ceremonies.

The faculty guests included Miss Oliver, Miss Wombough, Mr. Sackett and Miss Sergeant who co-operated so kindly in making the meal a success.

Mr. Sackett, dressed as Spartacus, gave that hero's address to the gladiators as his share in the entertainment while the other guests entertained with recitations or musical numbers.

This banquet was one of the outstanding events of the social season and was greatly enjoyed by all who attended.







## Home-Making Club

The Home-Making Club was first organized on October 19, 1932, for girls of the Home Economics classes.

### OFFICERS

|                             |                |
|-----------------------------|----------------|
| <i>President</i> .....      | Arzona Harding |
| <i>Vice-President</i> ..... | Helen Oelkrue  |
| <i>Secretary</i> .....      | Edna Biehler   |
| <i>Treasurer</i> .....      | Mary Hollander |

### FACULTY ADVISORS

Miss Wall   Miss Dudley   Miss Curtiss   Miss Sergeant



# Home-Making Club Members

*Post Graduate* Virginia Reddy

## *Seniors*

Ethel Bergstrom  
Mary Chiapusso  
Lucille Feigel  
Jane Gibbons  
Catherine Gill  
Anna Heil  
Anne Kuzak  
Martha Rucinski  
Helen Ruggles  
Mareta Ruggles  
Serafine Sirianni  
Esther Stier  
Edna Wright

## *Juniors*

Josephine Ball  
Augelina Bilotta  
Josephine Butler  
Frances Bridge  
Geraldine Chappell  
Helen Consedine  
Helen Cords  
Ina Hall  
Jane Malone  
Lucille Martz  
Ruth Marlatt  
Kathleen McAuliffe  
Dorothy McGivern  
Christine Mitchell  
Thelma Mohr  
Concepta Moricca  
Ruth Morris  
Aleta Nelson  
Eumogene Nolder  
Ruth Rottstedt  
Marjorie Reddy  
Joan Reel  
Maxine Snyder  
Kathryn Walsh  
Stella Zawada

## *Sophomores*

Dorothy Allen  
Marion Anderson  
Ann Augimeri  
Madeline Belvees  
Dorothy Bergstrom  
Bertha Brockel  
Jane Cartwright  
Kathryn Cheladyn  
Helen Colt  
Mary Cords  
June Curry  
Helen Dawson  
Kathryn Dimicco  
Julia Ford  
Anne Hickey  
Ann Kaydas  
Ruth Keller  
Helen Kolata  
Angeline Kula  
Esther Kittle  
Jane Lee  
Betty Lewis  
Agnes Mallery  
Jane Milliman  
Jeanette Neil  
Mary Payne  
Virginia Reilly  
Carolyn Reid  
Helen Safford  
Genevieve Shearer  
Mary Simmons  
Katherine Smith  
Jenny Spino  
Rita Stomierosky  
Stella Zudlo  
Marie Thurman  
Wilma Wilcox  
Edna Zemer

## *Freshmen*

Helen Balkney  
Marie Barrett  
Carmel Bean

Rose Bean  
Mary Brundage  
Julia Cappelletti  
Margaret Cole  
Mascaria Corwin  
Kathryn Culver  
Angeline Di Orio  
Irene Eberle  
Maxine Edwards  
Elva Ek  
Noreen Fitzgerald  
Mary Gofran  
Erma Goodman  
June Gowan  
Georgia Haley  
Geraldine Hatch  
Helen Hickey  
Lillian Hirliman  
Ruth Horton  
Mildred Hoskey  
Ruth Hunt  
Betty Marie Johnson  
Arloine Jordan  
Rose Marie Karst  
Doris Kenyon  
Sophia Kula  
Cecilia Kurwick  
Sandra Laison  
Adele Lian  
Gertrude Lucas  
Edna Martin  
Lucile Mitchell  
Yolanda Moricca  
Evelyn Morris  
Lucille Murphy  
Marjorie Nudd  
Ada Pascucci  
Victoria Pustawski  
Catheryn Ruby  
Ruth Schnell  
Juliette Scutella  
Charlotte Simpson  
Margaret Slawson  
Blanche Smock  
Sophia Stavish  
Betty Steinhart  
Germaine Sweetland  
Margaret Swezey  
Mary Szadlowska  
Miriam Tothill  
Josephine Walsh





## New York State Honor League

This is an honorary society, the aims of which are to increase interest in school activities, to set a higher standard of scholarship, and to develop the qualities of leadership, character, and service.

The first twenty per cent of the senior class of any high school under the supervision of the University of the State of New York makes up the first eligible list. This number is reduced to ten per cent of the class by two votes, the faculty vote and the student vote.

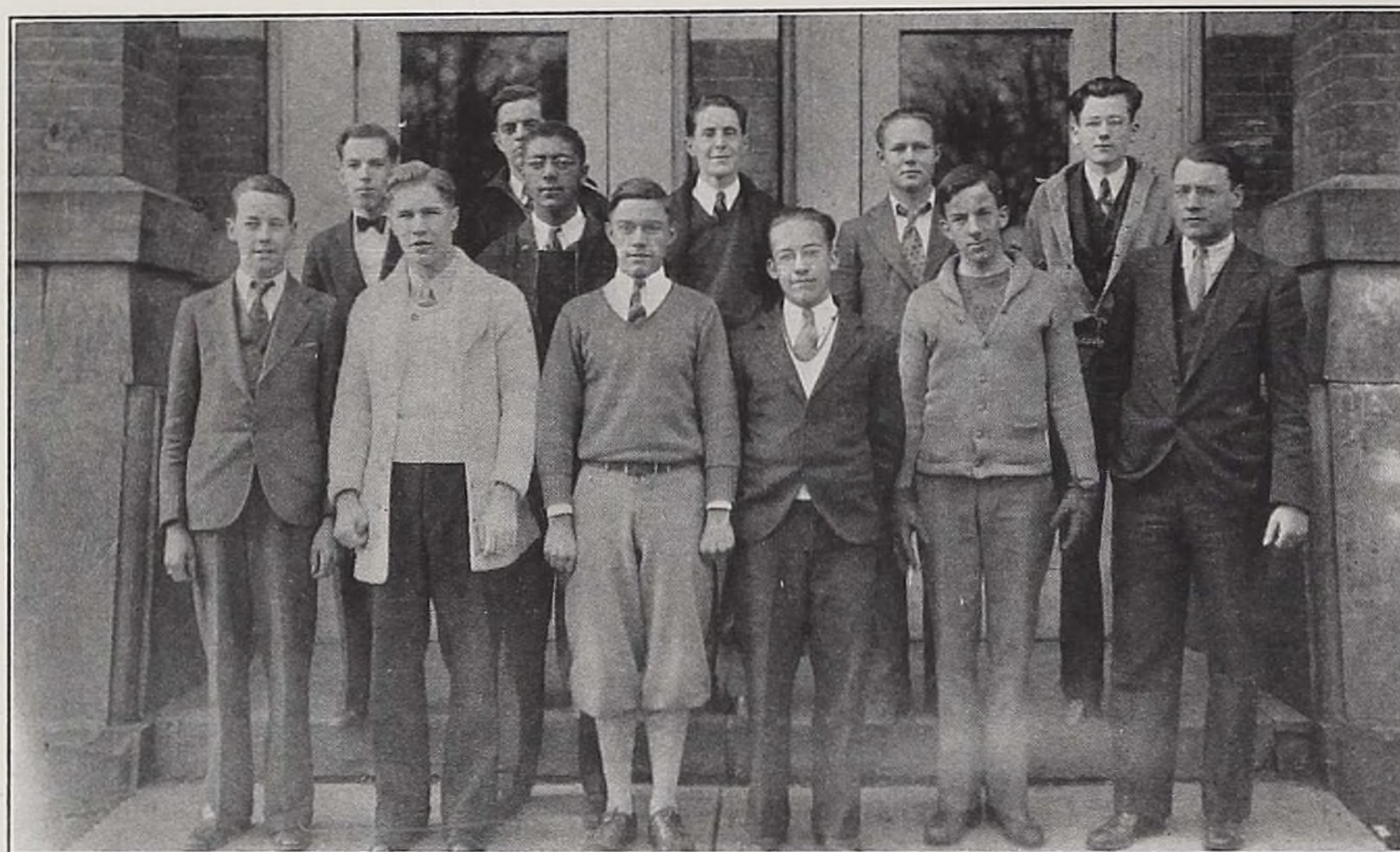
This year's membership is as follows:

Merville Allison  
Douglas Bosler  
Caroline Boyd  
Roy Card  
Martha Coon  
Tony DeRose  
Sara Ethridge

Robert Ewing  
Evelyn Hirst  
Lawrence Johnson  
Alice Longnecker  
Ruth Martin  
Francis Moricca  
Richard McLaughlin

Priscilla Oakleaf  
Esther Stier  
Marjorie Sturm  
Eleanor Tenglund  
Robert White  
George Wilcox  
Arthur Yahn





## Boys' Hi-Y

**Aim:** To create, maintain and extend throughout the community, high standards of Christian character.

**Activities:** The Hi-Y meets every Tuesday evening during the school year.

This year the club printed football schedules for the students with the help of the Davis Clothing Company as well as basketball schedules, later in the season.

Several members of the Hi-Y club attended the Western New York youth conference at Wellsville and came away wiser and better citizens.

A number of interesting meetings were held this year, under the supervision of Mr. Smith, faculty advisor and Roy Card, President. Such speakers as Rev. Graves, Mr. Sweetman of New York City and Mr. Chandler of Elmira were secured. Two lunches, an informal party for the Girls' Hi-Y, and the annual banquet were a part of the year's activities.

|                             |                |
|-----------------------------|----------------|
| <i>President</i> .....      | Roy Card       |
| <i>Vice-President</i> ..... | William Wright |
| <i>Secretary</i> .....      | William Brooks |
| <i>Treasurer</i> .....      | Harold Kamler  |
| <i>Advisor</i> .....        | Mr. Smith      |





## Girls' Hi-Y

The Girls' Hi-Y was organized this year with Mrs. Morris, Mrs. Atwater, and Mrs. Gallagher as sponsors. They started with fourteen girls as charter members. Two new groups have been taken in, bringing the total membership to nineteen.

These girls have a clubroom at the local Y. M. C. A. where they meet every other Monday evening.

As a group they have participated in many events throughout the year. Among these were two Y parties, a lecture by Mr. Markham, where they acted in the capacity of ushers and were entertained at a reception for him afterwards at the home of Mrs. Atwater, the George Washington exercises at the Y, and a play day at the Y at Christmas time. They heard two most excellent lectures; one by Mr. Francis Frey on the Olympics, and the other by Dr. Atwater on his recent trip to Europe.

The club basketball team played a very short schedule, breaking even at the end.

This club was organized to promote a healthful combination of clean sports, clean speech, clean scholarship, and clean living. They hope to go on through the years as an active club living up to their high ideals.

The members of the club are: Jane Fuller, President; Helen Perkins, Vice-President; Mary McLaughlin, Secretary; Betty Jobe, Treasurer; Alice Longnecker, Grace Runals, Ruth Perkins, Jean Perkins, Dorothy Saylor, Marcia Shank, Mae Stimson, Hazel Oldham, Jane Ackley, Virginia Everhart, Belle Jobe, Jane Crowley, Elizabeth Canada, Betty Whiting, Mary Olds; Gertrude Sturm, Guard.



## The Library 1932-1933

Miss Anna Flaim of the supply staff of the Olean Public Library and of the High School student staff, 1929-30, volunteered to assist Miss Schleich before and during the opening weeks of school. When school began, Miss Ida Gould, teacher of modern history who is working for her degree in the Columbia Summer School of Library Service, also rendered valuable first aid in helping to make the new books and the accumulated magazines available as soon as possible to the faculty and student body.

The old bound accession book being filled, a new loose leaved one was started and time thus saved by typing the entries while the current magazines were drilled and sewed into new inexpensive holders which have better preserved these periodicals for filing and given the rack and tables a neater appearance all year.

As an economy measure, all teacher periodicals and other magazines that could best be spared were discontinued this year. For the same reason, a hundred and twenty dollars list price was saved on books. In spite of this fact, by the careful ordering of well bound reprints, the actual number of volumes added by purchase this year exceeded that of last year by one.

Gifts of books to date during the year have been as follows: 24 on wood and 15 on metal work by the Industrial Department, one on sculpture by the Contemporary American Sculpture Society, and one of Elmira College Stories by Elmira College and delivered through the courtesy of Mrs. Gilbert Farwell. As this article goes to press, Miss Schleich is about to make her annual contribution of a book in connection with a contest between home rooms in a campaign for the return of missing and long overdue books.

Mrs. Caroline Larkin has donated the Sunday N. Y. Herald-Tribune and Miss Schleich the Sunday N. Y. Times, the daily Olean Times-Herald and the Saturday Evening Post.

Up until her accident on Columbus Day, Miss Marjorie Sturm was a pleasant and most efficient library assistant. During January Regents Miss Sturm and Miss Esther Levine did an unusually good piece of work in taking inventory of the 2852 volumes in the library at that date.

Mrs. Larkin's Commercial Geography II classes have this year been scheduled to the library fortnightly for reference like the classes in history and about 25 new books placed at their disposal which books can also be used by the English and History departments. English I B and III and IV A classes have as usual been instructed in the use of books and libraries by the librarian.

Regulations formulated by the Library Board of Faculty Members were posted in the library, study halls and each home room. History teachers have also assisted at the 4 o'clock rush for books Thursdays and Fridays.

Miss Brooks of the Public Library presented us with a poster of the First White House, Mrs. Rogers, Librarian of Portville, paid us a welcome visit and we were inspected by Miss Kennedy of the State Department. Acting upon a helpful suggestion of the last named, Miss Schleich asked thru Miss Mitchell's Department for much needed student assistants and is planning a schedule for them. Of them to date Miss Doris Barber has rendered the greatest amount of efficient service.









## Orchestra

### OFFICERS

|                                      |                  |
|--------------------------------------|------------------|
| <i>President</i> .....               | William Simpson  |
| <i>Vice-President</i> .....          | Nelda Randall    |
| <i>Secretary and Treasurer</i> ..... | Kathryn Henneman |
| <i>Business Manager</i> .....        | Howard Keller    |

### MEMBERS

| VIOLINS            |                  | CELLO              | HORN            |
|--------------------|------------------|--------------------|-----------------|
| Regina Cappelletti | Carl Huff        | Mary Olds          | Gilbert Orcutt  |
| Charles Carlson    | Norman Johnson   |                    |                 |
| Berdena Cranner    | Darrel Kautz     | FLUTE              | TROMBONE        |
| James Crowley      | June Kriley      | Genevieve Mishanec | Jack Randall    |
| Jane Crowley       | Mable Kronmiller | June Seely         | Maynard Wright  |
| Virginia Dawson    | Ruth Lang        |                    |                 |
| Helen Dossi        | Marco Lesi       | CLARINET           | BARITONE        |
| Mary Garvey        | Edward LeValley  | William MacDuffie  | Howard Keller   |
| Eunice Gleason     | Elaine Shedd     |                    |                 |
| Corwin Grimes      | William Simpson  | TRUMPET            | BASS            |
| Kathryn Henneman   | Neil St. Clair   | Arthur Johnson     | George Harvison |
| Ann Hickey         | Dean Stimpson    | John Proudfoot     |                 |
| Donald Hopkins     | James Travis     | William Wright     | PIANO           |
|                    | Harold Weaver    |                    | Nelda Randall   |

### ACTIVITIES

Concert at Trinity Church—December 6.

Part of Orchestra played at Edwin Markram's lecture.





## Band

### OFFICERS

*President* .....Maynard Wright  
*Vice-President and Secretary* .....Beresford Ellis  
*Librarian* .....Geo. Harvison

### MEMBERS

#### CLARINETS

Stephen Bazow  
 William MacDuffie  
 Richard Stone

#### SAXOPHONES

Harold Burdick  
 Beresford Ellis  
 Loren Miller  
 William Rodie

#### TRUMPETS

Kenneth Bell  
 Joel Dorman  
 Michael Ewanciw  
 Arthur Johnson  
 Mike Loskey  
 Richard McMullin  
 George Martin  
 John Proudfoot  
 Alton Warner  
 William Wright

#### HORN

Duane Christensen  
 Gilbert Orcutt

#### MELLOPHONE

Regina Cappelletti

#### BARITONE

Howard Keller

#### TROMBONE

Jack Randall  
 Maynard Wright

#### BASS

George Harvison

#### DRUMS

William Simpson

### ACTIVITIES

Football games.  
 Snake Dance before Bradford game.

Armistice Day Parade.  
 Spring Concert.





## Girls' Glee Club

### OFFICERS

*President* .....Audrey Carver  
*Vice-President and Secretary* .....Jean Ball  
*Business Manager and Treasurer* .....Alice Olson  
*Librarian* .....Kathryn Henneman

### MEMBERS

#### FIRST SOPRANOS

|                    |                |               |                   |
|--------------------|----------------|---------------|-------------------|
| Rose Abbott        | Eleanor Eisert | Betty Lewis   | Ruth Perkins      |
| Jean Ball          | Esther Freitag | Anna Madwin   | Anne Petz         |
| Regina Cappelletti | Barbara Gabler | Edna Martin   | Frances Pfeffer   |
| Jane Cartwright    | Erma Goodman   | Ermena Martin | Charlotte Simpson |
| Audrey Carver      | Mary Grear     | Alice Olson   | Rita Stomierowsky |

#### SECOND SOPRANOS

|                   |                     |                    |               |
|-------------------|---------------------|--------------------|---------------|
| Dorothy Bergstrom | Mary Gustafson      | Mable Kronmiller   | Cecelia Panus |
| Mary Brundage     | Kathryn Henneman    | Bernice Leonard    | June Seely    |
| Norma Carter      | Elizabeth Ibaugh    | Roberta Lloyd      | Helen Shaw    |
| Betty Jane Geuder | Betty Marie Johnson | Genevieve Mishanec | Elaine Shedd  |
| June Gilboy       | Rose Marie Karst    | Marion Muntz       | Dorothy Weis  |
| Eunice Gleason    | Virginia Kelly      | Jeannette Neil     |               |

#### ALTOS

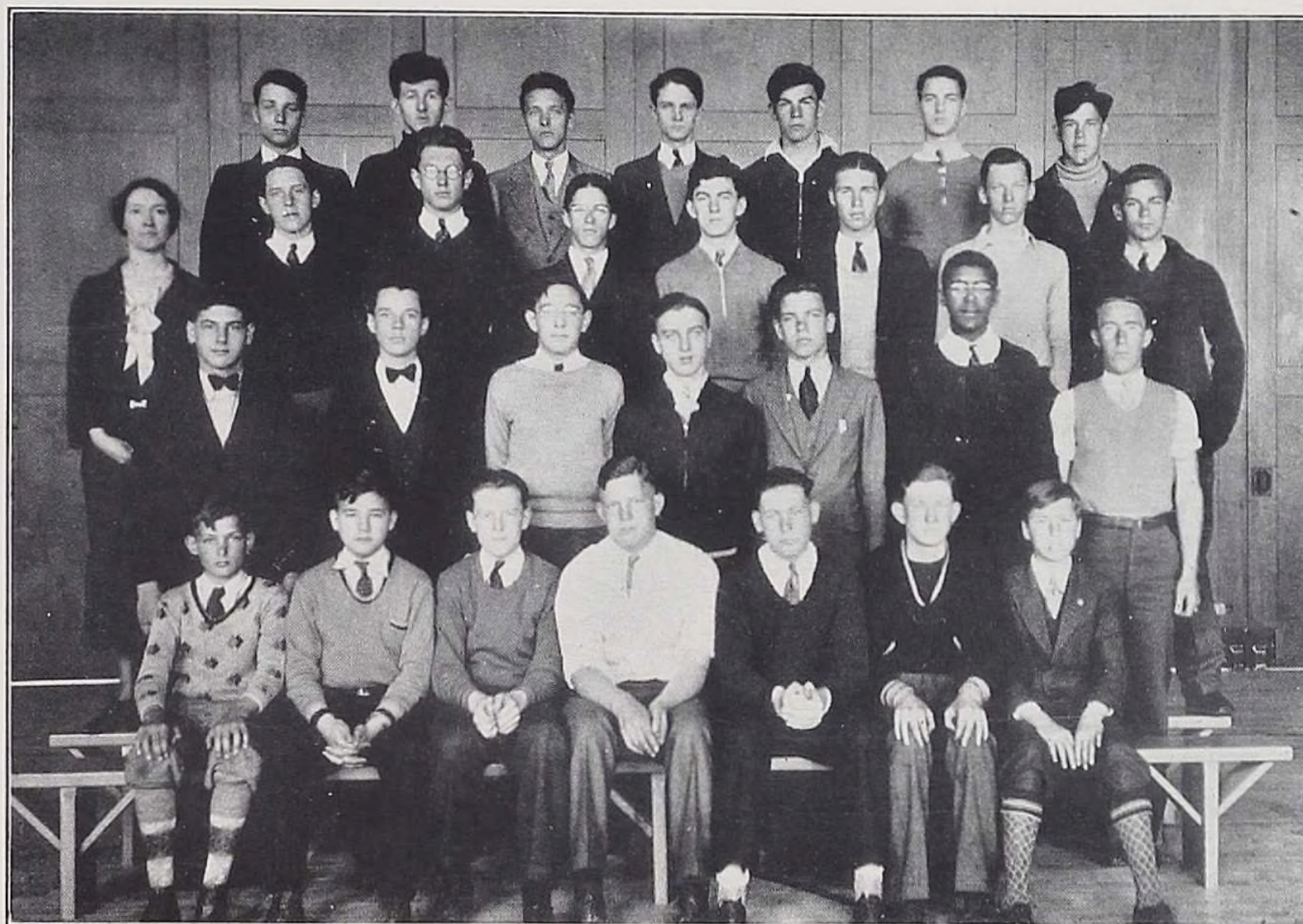
|                 |                  |                 |
|-----------------|------------------|-----------------|
| Helen Havens    | Mary Madwin      | Dorothy Saylor  |
| Arlouine Jordan | Ruth Morris      | Betty Steinhart |
| Ruth Lang       | Harriet Rockwell | Helen Weaver    |

Accompanist—Margaret Ellison

### ACTIVITIES

Concert—Trinity Church—December 6.  
 Vesper Program at Y—February 19.  
 Spring Concert—May 12.





## Boys' Glee Club

### OFFICERS

|   |                    |
|---|--------------------|
| <i>President</i> .....                      | Robert Giberson    |
| <i>Vice-President and Secretary</i> .....   | William Simpson    |
| <i>Business Manager and Treasurer</i> ..... | Richard McLaughlin |
| <i>Librarian</i> .....                      | Gaylord Frost      |

### MEMBERS

| 1st TENORS      | 2nd TENORS       | 1st BASSES         | 2nd BASSES        |
|-----------------|------------------|--------------------|-------------------|
| John Hardy      | Merville Allison | George Harvison    | Kenneth Bell      |
| Earl Harter     | John Edwards     | Howard Keller      | William Brooks    |
| Merle Parker    | Robert Giberson  | Everett Lord       | Herbert Crandall  |
| William Simpson | Jack MacDonnell  | William McAdam     | Gaylord Frost     |
| James Travis    | Donald McCall    | Richard McLaughlin | Donald Hopkins    |
| Harold Weaver   | Frederick Royer  | Dan Ray            | Charles McCue     |
|                 | Carl Sederholm   | Arthur Rees        | William McCue     |
|                 | Robert Stull     |                    | William McGiveron |
|                 |                  |                    | William Williams  |

Accompanist—Carlton Chamberlain

### ACTIVITIES

Double Quartette—School 2 P. T. A.  
Double Quartette—Auer Club, April 3.

Rocky Crest—April 25.  
Spring Concert—May 12.

### OFFICERS OF GENERAL MUSICAL ORGANIZATIONS

|  |                    |
|--|--------------------|
| <i>President</i> .....                       | William Wright     |
| <i>Vice-President and Secretary</i> .....    | Genevieve Mishanec |
| <i>Business Manager and Treasurer</i> .....  | Robert Evens       |
| <i>Girls' Glee Club Representative</i> ..... | Dorothy Saylor     |
| <i>Boys' Glee Club Representative</i> .....  | Everett Lord       |
| <i>Band Representative</i> .....             | Howard Keller      |
| <i>Orchestra Representative</i> .....        | Betty Harter       |



# Echoes of the Past



"JIMMIE" FULLER



PETER HOFFMAN



CATHERINE O'DONNELL



JAMES QUIGLEY



FRANCIS MORICCA



MARY AURINO



FROM WELLESVILLE PLAYDAY



HIKING CLUB



CHEERLEADERS



JANE FULLER



BUTCHELLO - T ROGERS



CATHERINE GARVEY



VIRGIL BANQUET



"LIZZIE"



GRACE RUNALS



YOUNG AMERICA - NORMA UTECHT



ALICE LONGNECKER



OLEAN - DEPEEW GAME



CAROLINE BOYD



BERNICE HOPKINS



MAE HENDERSON



BABY LENNY



JUST BOYS



MONT AND "CHUCK" SHOEMAKER



# Echoes of the Past



WANDA WEPASNICK



GIRLS (MOSTLY)



LEONE VARLEY



MORE GIRLS



EVERETT LORD



ROY CARD



ANTHONY CAPPELLETTI



GRACE DAVIS



J.S. WILLIAMS



AT THE FIVE-MILE



LUCILLE FEIGEL



FITZPATRICK-SCHNELL



RUTH MARTIN



LAWRENCE JOHNSON



WILMA KARL



MARSHALL-PADLO-FITZPATRICK



AIR PLANE VIEW OF OHS.



EARL OSBOURNE



EVA HITCHCOCK



VIRGINIA DAWSON



BURNICE EAMAN



SARA ETHRIDGE









The work in Fine Arts at the Olean High School has shown great progress during the past two years. This is due principally to the fact that a departure has been made from the methods formerly employed in art teaching. The New York State Syllabus requirements are the same, but the approach is different. Great freedom is allowed with minimum stress on principles. The creative ability of the pupil is developed and joy and enthusiasm in the work is the result.

In January, an exhibit was held at the Olean Public Library under the auspices of the Little Theatre Guild. The committee kindly reserved a generous space for this exhibit. Examples of water color, charcoal, pen and ink and pencil sketching, block printing and modeling were displayed. The sculpture, although small, showed a promising future in this medium, and it is expected that more emphasis will be placed on this next year.

Alice Longnecker was awarded the George Bellows Memorial Scholarship in the annual national competition in literature, crafts and visual arts conducted by the Scholastic Magazine. This award carries considerable honor since there are 2000 high schools competing.

Last year, Olean again entered the limelight when Ione Bronold was given a sculpture award by this same magazine.

This year, three seniors expect to receive Fine Arts Diplomas. They are: Carolina Gagliardi, Alice Longnecker and Charles Shoemaker. Five units in drawing and a comprehensive art examination are necessary in order to obtain this diploma.







*As Goldsmith might have said—but didn't:*

Full many a gem of purest ray serene,  
The dark unfathomed caves of ocean bear.  
Full many a BARD is born to writhe, unseen,  
And waste his sweetness on the desert air.

*As these might have done—but didn't:*

### MOON'S ANSWER

Oh, silvery spot  
Way up in the sky  
What are you there for,  
Will you tell me why?

Then answered the disc  
To my puzzled word  
Like sighing of wind,  
'Tis this that I heard.

"Oh, I am the moon  
Way up the sky.  
I watch for lost souls  
As they wander by.

Then, helped by the stars  
I gather them in  
And shelter them 'neath  
My wide spreading brim.

Here, they are happy;  
Know good and rejoice;  
Seek to do better  
For such is their choice.

So, all of my life  
I make these souls bright.  
And now you know why  
I shine through the night."

—Betty Jobe.

### TWILIGHT

Grey dusk,  
Silvery moon,  
The world at peace;  
Stars glow,  
Breezes croon,  
Harsh noises cease.

All thought  
Fair, sublime,  
The world at rest;  
All space  
Without time,  
The world at best.

—Betty Jobe.

### JOYS OF LIVING

I love the cheery, leaping tongues of  
flame

That cast a flickering, lambent glow  
into the gloom,

And chase the shadows into fanciful,  
grotesque shapes.

I love the deep, restful blue, that is  
the night sky

With its myriads of sparkling gems,  
That are the stars—constant, eternal,  
true!

I love to lie and look into the leafy  
boughs of tall trees,

Trees that hug the soft, moist earth  
with their roots,

And with their branches, whisper  
carresses to the fleeting wind.

I love to watch the sun sink beneath  
the purple hill-line,

And shoot his flames of dying glory  
into the pale blue of the sky.

I love the faint glow in the east that  
heralds the coming of the day.

I love the moment when Dawn glides  
across the hills,

And silently bids the sleeping world  
awake and face life anew.

I love the thrill of winding roadways  
that twist and twine,

Beckoning the traveler to adventure  
in some unknown spot.

I love old houses with their quaint  
charm,

That years of joy and happiness have  
brought.

I love to hear the echoes that I fancy  
haunt them

Of the mingled tears and laughter of  
bygone years.

I love these things and oh, so many  
more.

I love to feel the urge and tingle that  
thrill me through such little  
things.

I love it all and more—I love to be  
alive!

—Betty Quirin.



## AT EVENING

Have you ever watched from the  
garden  
At the hour when the sky turns gold,  
When the sun in its dying glory  
Is saying "goodnight" to the world?  
It's the hour which we know as twilight  
When the birds sing their even-songs,  
And the flowers bend their sleepy  
heads  
Holding their petals tight-furled.  
It's quiet all through the woodlands,  
And to each sylvan dell  
Comes the still, calm peace of twilight,  
God's message that all is well.

—Betty Quirin.

## THE ELEVENTH HOUR

Across a war torn land  
There falls a hush  
Like the first breath of spring  
Out of the East.  
A moment's brief respite  
From grim carnage,  
Or is this lasting peace,  
That fills the air?

No answering shriek of shell  
No cannon's roar  
Reverberates against  
Their deadened ears.  
Out of the blackness of  
Despair there comes  
The dawn of peace, upon  
A new born world.

—Richard McLaughlin.

## MY PHILOSOPHY

I know not what joy is theirs  
Whose all is wealth, who seek re-  
nown  
Or what proved sense of regal scorn  
Is theirs, who wear a monarch's  
crown.

Yet this I pray, Lord, breathe a song  
Into my heart, which there may stay  
Forever, and upon my lips  
A smile, to ease the dreary day

And though our trail be steep and  
long,  
Though dark and wearisome the way,  
A smile can pierce the blackest night,  
A song can warm the coldest day.

—Richard McLaughlin.

## ON BEING THANKFUL

"Thankful for what?"  
He laughed a bitter laugh  
Then went his way,  
And as he passed  
There seemed to come a blot  
Across my day.

I pondered long  
Upon his words and then  
There came this thought  
Which springing from  
The depths of his despair,  
It's lesson taught.

Though loosed our hopes,  
Though shattered all our dreams,  
Still, in our tears,  
For unseen gifts  
May we return our thanks  
To Him, who hears.

—Richard McLaughlin.

## NEW SCHOOL SONG

Stand up and cheer,  
Stand up and cheer for Olean High  
School!  
For today we raise  
The red and gold above the rest,  
Above the rest!

Our Boys are playing  
And they are bound to win today,  
We've got the rep, We've got the rep,  
We've got the pep, We've got the pep,  
And we're all for Olean High.  
Rah! Rah! Rah!



## Date Book for 1932-1933

- SEPT. 14—Athletic Association organized.  
Soccer begins.  
Gym Work begins.
- SEPT. 21—Girls' Glee Club Elects Officers.
- SEPT. 22—Class Elections.
- SEPT. 24—Olean opens the football season by beating Little Valley 46-0.
- SEPT. 26—Musical Clubs Elect Officers.
- SEPT. 31—First Dime Dance.
- OCT. 1—Olean beats Allegany on gridiron 13-9.
- OCT. 5—Student Council Elects Officers.
- OCT. 6—Cheerleaders Chosen.
- OCT. 8—First hike of the Hiking Club.
- OCT. 15—Home Making Club organized.  
Olean beaten by Lackawanna 32-0.
- OCT. 18—Wayside holds first meeting.
- OCT. 22—Soccer Play Day.  
Olean beaten by Depew 6-0.
- OCT. 24—Girls' basketball practice starts.
- OCT. 28—The second Dime Dance held.
- NOV. 2—First boys' H-Y meeting.
- NOV. 5—Student Council meeting.  
Olean defeats Hornell 12-0.
- NOV. 8—Soccer Banquet held.
- NOV. 9—Student Police elected.
- NOV. 11—Olean has winning float in Armistice Day Parade.
- NOV. 12—Olean defeats Bradford 19-7.
- NOV. 19—Olean closes the football season by beating Salamanca 51-7.
- NOV. 21—First meeting of the Girls' Hi-Y.
- NOV. 23—Dime Dance.
- NOV. 30—Girls' Basketball teams chosen.
- DEC. 5—Grid Letters awarded.
- DEC. 6—Music Clubs give concert.
- DEC. 7—Cuba Student Council visits O. H. S.
- DEC. 9—Candy Sale.
- DEC. 10—Olean opens its basketball season by beating Gowanda 30-6.
- DEC. 14—Home Making Club has Christmas party.
- DEC. 21—Christmas vacation starts.
- DEC. 21—James Fitzpatrick elected captain of 1932 football team.  
Football Dance.
- DEC. 29—Alumni Banquet.
- JAN. 11—Olean beats Allegany 20-11.
- JAN. 13—Olean beats Delevan 32-15.
- JAN. 17—Girls' Basketball Banquet held.



- JAN. 19—Term tests start.
- JAN. 20—Olean beats Portville 24-22.
- JAN. 21—Olean beats Wellsville 37-15.
- JAN. 25—O. H. S. Art Exhibit at Public Library.  
Regents Exams over.
- JAN. 27—Olean beats Bradford 21-20.
- JAN. 30—New term begins.
- FEB. 3—Olean defeats Franklinville 22-20.
- FEB. 4—Olean defeats Jamestown 26-19.  
Boys' Cooking Class starts.
- FEB. 8—Home Making Demonstration featuring costumes from historical to modern times.
- FEB. 14—Wayside meeting with St. Valentine's Day program.
- FEB. 15—French 3 Class organized.  
Musical organizations furnished selections at the Musical.  
Entertainment at the Y. M. C. A.
- FEB. 17—Olean beats Delevan 55-24.
- FEB. 18—Olean defeated by Bradford 33-14.
- FEB. 19—Richard McLaughlin sings over station WEBR.
- FEB. 20—Glee Club holds party.
- FEB. 22—Norman Utecht starts a noon recreation class.
- MAR. 1—Meeting of Home Making Club.  
Dime Dance.
- MAR. 3—Olean beats Portville 51-12.
- MAR. 10—Olean beats Little Valley 21-19.
- MAR. 15—Girls' Playday at Wellsville.  
Special Assembly.
- MAR. 17—Olean defeats Salamanca 24-13.  
Dime Dance.
- MAR. 22—Girls' Volleyball League started.  
Pre-College conference concluded.
- MAR. 23—Virgil Banquet.
- MAR. 24—Olean defeated by Dunkirk 25-29.
- MAR. 29—Varsity Basketball Letters awarded.  
Wayside party.  
Orders for Senior Rings taken.
- APR. 3—All Eastern-Western Basketball game.
- APR. 4—Wayside meeting.  
Later Spring Events:  
Wayside dance. Spring Concert. Junior-Senior Prom.  
Commencement. Track Meet.



# a d'advertissements





# Notice

We wish to call your attention to the following advertisements, in the hope that you will patronize those merchants who have done so much towards making our publication a success. It is only through their kind co-operation, and their interest in the High School activities that we have been able to put through this project, and we sincerely hope that their kindness will be rewarded.

"CONGRESS"

STAFF

1933





# O. K.

BUSINESS IS A GOOD CHOICE  
BUT . . . REMEMBER



It Pays To Attend A Good School



BRYANT & STRATTON  
BUFFALO

A VARIETY OF COMPLETE COURSES. REASONABLY PRICED.  
COLLEGE-EDUCATED, AND BUSINESS-EXPERIENCED, FACULTY.  
EXCELLENT ROOMS AND BOARD NEAR THE SCHOOL.  
FREE PLACEMENT SERVICE TO GRADUATES.  
SEND FOR CATALOG. ADDRESS REGISTRAR,  
1028 MAIN STREET, BUFFALO, NEW YORK.





EYE EXAMINATION  
GLASSES

*I See That You See*

ROWE & PEARSON

A Triangle Store

Quality Groceries

Cor. 4th & State  
Olean, N. Y.

Phone 4157  
Free Delivery

Heenan's Funeral Home

401 East State Street

Olean, New York

Compliments of  
**Liberty Company**

266 North Union Street

Olean, N. Y.

Compliments  
of  
**COLUMBIAN  
SQUIRES**



For  
Graduation

Cheer Leader  
SUITS

**\$19.75**

"CHEER LEADER STYLES" with 2 Trousers

**GAVIN-McCARTHY**

For Your Clothes and Shoes

*Olean's Best Jewelers*



Expert Work at Lowest Prices



**Otto Miller & Son**

*Jewelers Since 1865*

**TAYLOR'S**  
**Billiard Academy**

ICE CREAM, TOBACCO  
CONFECTIONERY

*Quicker Service*  
*Latest Baseball Results*



Try FISHER'S *First*---

This Slogan becomes more popular  
each day with smart women here-  
abouts, when in need of—

Corsets

Hosiery

Gloves

Accessories

FISHER'S

116 W. State St.

The Woman's Store

Olean, N. Y.

Compliments  
of  
**THE  
DARLING  
SHOP**



Compliments of  
**BRADNER'S**

*"Say It with Flowers"*

AND

*"Call Me Oppie"*

**W. H. Simpson, Inc.**

*Established 1878*

**Plumbing and Heating  
Contractors**

PHONE 5651

184 N. Union St. Olean, N. Y.



## To Be Identified

with a strong bank adds prestige to the financial transactions of business houses. It also pays young people to learn about banking customs and to use a strong bank's service if opportunity affords.

*The First National Bank,  
"Oldest National Bank in Cattaraugus County"  
invites you to consult it any time.*

## The First National Bank

CORNER UNION AND STATE STREETS,  
OLEAN, N. Y.

## "Knowledge is the First Element of Efficiency"

The Olean Chamber of Commerce makes every effort to supply reliable information with regard to promotions of all kinds from those of the house to house canvasser to the gold mine artist.

This service is available and is being used by the largest corporations as well as the humblest house owners in Olean.

We lay special emphasis on the advice:

Before you invest—investigate. Pay no money to strangers.

## Olean Chamber of Commerce



## Better Banking

This bank uses its influence constantly in behalf of better banking—better service to its customers and increasing usefulness to the community.

You are cordially invited to make full use of our facilities.

**EVERY BANKING SERVICE**

## EXCHANGE NATIONAL BANK OLEAN, NEW YORK

*The Oldest Bank in Cattaraugus County*

CAPITAL, \$1,000,000.00

## Sound Foundation for a Useful Career

**M**ANY High School students, in later years, refer to their years at school as their happiest days, and time well spent.

We congratulate the graduates of our High School and wish them success. They have laid a sound foundation for a useful career. Earnestly strive to accomplish something worth while. Build well for the future. Now that you have acquired knowledge and technical information, remember to acquire the habit of thrift which will put you on a sound financial foundation. Set aside something from your income and deposit it regularly with Olean Trust Company where it will be secure and grow continually at compound interest. Your account is cordially invited.

### CHECKING ACCOUNTS

**3% Paid on Accounts in our Interest Department.**

**Acts as Executor, Trustee, Administrator, Guardian and other Fiduciary Trusts.  
Travelers Checks Issued.**

C. L. BOCKMIER, President  
C. E. DITTRICH, Secretary

W. A. FLYNN, Vice President  
M. J. HANNON, Treasurer

## OLEAN TRUST COMPANY OLEAN, NEW YORK

**MEMBER FEDERAL RESERVE SYSTEM**



# Miller Hardware Co.

"Complete Home Furnishers"

Olean, N. Y.

## A Special Invitation To Visit Our Store

WHETHER you are thinking of buying or not doesn't matter. We want you to come in—there's so much to see. All the new things are here. You'll enjoy a visit, we feel sure—and perhaps you'll get many suggestions.



We Feature in  
**Quality—Price**  
**Service**



4123



*We carry a complete  
line of—*

Sporting Goods  
Hardware  
Paint  
Silverware  
Furniture  
Lamps  
Rugs  
Linoleums  
Draperies  
Curtains  
Stoves  
Refrigerators  
Radios  
Washers  
Electrical Supplies  
and Appliances  
Toys  
China  
Glassware  
Kitchen Utensils  
Factory and  
Contractor  
Supplies, Etc.

**Ask Us About Our Easy Payment Plan!**





*Davis*  
**"Prep" Clothes**  
*—and first "longies"*

Suits and Topcoats, Polo Coats and Sport Clothes—tailored by the best makers we know anything about! In the approved University manner. They're Olean's Standard for Young Men's Clothes. Economically priced, too! Come in, see for yourself.

YOUNG MEN'S SHOP  
*Main Floor*



**DAVIS**  
**CLOTHING COMPANY**

**154 North Union St.**

**Olean, New York**



# GRADUATION

*The First of Many  
Important Occasions*



May we share many other important occasions in your lives and advise you how to make them happier.

Leo T. Dugan Company  
*Quality Jewelers*

Masonic Building

Olean, New York

## DON SEELE STUDIO PHOTOGRAPHS

*Superiority Universally Admitted*

*Special Rates to Students*

UNION STREET

*Young Men's Suits*

**\$9.90** and  
up



**Kamler Brothers**

Cor. State and Second Sts.

**B U S E S**

ALLEGANY MOTOR  
COACH COMPANY



*A*  
*FRIEND*

*For Dances and all Social Functions*

CALL

JOHNNIE GABRIEL

*and His*

SYNCOPATORS IN BLUE

*Featuring Herbie L., Song Stylist*

108 N. Second St.

Phone 7588

*'Olean's Most Popular Dance Band'*

Floyd and  
His Vagabonds

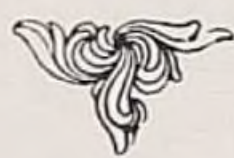
F. K. MILLER, Manager

*Parties and Dances a Specialty*

817 Crown Street

Olean, N. Y.

Congratulations  
CLASS OF 1933



PALACE THEATRE

"Olean's Theatre"

"Consistently Good Shows"



**START YOUR  
COLLEGE  
COURSE THIS  
SUMMER . . . .  
AT LOW  
COST..**

Here is an unusual opportunity to begin your Freshman year—without delay—without even leaving the city. Save time and money by starting your college course this summer. The Summer Session of the University of Buffalo, offers you a full schedule of regular Freshman Subjects.

**6 WEEKS OF  
FRESHMAN SUBJECTS**

*July 5th . . . August 12th*

Credits given for this work are accepted by colleges and universities. Small classes insure personal attention and private conferences. How could you invest this summer 6-weeks period to better advantage?

Get a head start on your college course, or work off that "condition." Why not phone or write now, for a free catalogue of courses.

C. S. MARSH, *Director*

**SUMMER SESSION  
UNIVERSITY  
OF BUFFALO**

*Room 90 Crosby Hall  
Buffalo, N. Y.*

*"A Good School"*

**Chown SCHOOL  
OF  
BUSINESS**

**Secretarial and Business  
Administration**

**Courses**

**for**

**High School**

**and**

**College Graduates**



**Summer Term Opens July 10th**

**Fall Term Opens September 18th**



**703 Main Street  
Buffalo, N. Y.**



*When Your Eyes Need Attention  
Consult an Oculist*



DR. DONALD A. MACDUFFIE  
OCULIST

*407 East State Street*

*Success to Class 1933*

H. F. HALWIG



# If You Operate a Store or a Business

YOU open up for business every morning promptly at the same hour and close every night at the same hour.

*You do this six days a week, rain or shine, throughout the year.*

Your clerks and sales people are on hand from the opening hour until closing.

EVERYTHING goes along this way SIX DAYS A WEEK.

You try to do some business during every business hour of every day in every week.

You keep your store well lighted; your windows are always attractive.

*There is a regularity about the conduct of your store every business day of the year which does not strike you at all unusual because this is as it should be.*

And yet the merchants who, in addition to doing all of this, tell the people about their store, its location, its attractiveness, price, every business day of the year, are few and far between.

Some speak to their public three times a week, some of them twice a week, some of them once a week. But they do it EACH WEEK IN

THE YEAR just the same as they keep their store open EVERY WEEK IN THE YEAR.

Some speak to their public once or twice a month, some once or twice a year. A lot of them never say a word about it.

These wonder why they don't have more customers and more sales. *They don't have enough customers because they don't have enough callers.*

AND THEY DON'T HAVE THE CALLERS BECAUSE THEY DON'T INVITE THEM!

Just opening up every day won't bring in the customers—you have to invite them every week—other merchants make a practice of this and that's why they have the customers and the other fellow hasn't.

Look over the OLEAN TIMES-HERALD and note the firms who continuously, regularly and unremittingly use its advertising columns for a message to keep old customers coming and to get acquainted with new ones.

Sixty per cent of the Times-Herald circulation is outside of Olean and more than sixty per cent of the business in Olean comes from this outside territory.

THINK IT OVER.



Conrad Lord - Glee Club

John Grandfort - Band and Orchestra

Benjamin Ellis - Band.

Virginia Dawson - Orchestra

Merville Allison - Glee Club

Ernest Cridler

Erwin Chevassu

Joseph Keenan

William Simpson











